

CAMPUS HOUSING

2022 - 23



FIND YOUR PURPOSE

GRAND CANYON
UNIVERSITY®

PRIVATE. CHRISTIAN. AFFORDABLE.

GCU IS RANKED
**#6 BEST COLLEGE DORMS
IN AMERICA¹**

¹ RETRIEVED FROM NICHE.COM IN NOVEMBER 2021



WELCOME HOME LOPEES!

Just imagine...a campus life experience that is created to support your studies while offering the comfort and convenience of essential amenities at your fingertips. Student satisfaction is our mission and we strive to ensure that your time on campus at GCU is a truly one-of-a-kind experience.

As an on-campus resident, you can pick your own roommates and auto-renew your room if you find that you love your location. You can also live within walking, biking or skateboarding distance of all your classes or take advantage of intra-campus transportation. Covered parking is available for students with a car on campus. There are multiple garages located nearby your living area.

Finding your favorite food is easy with 25 popular dining options on the GCU campus to accommodate every palate and preference. Our beautiful workout facilities and pools are easy to get to from most every apartment or residence hall. Numerous extracurricular activities offer fun and recreation, as well as the opportunity introduce you to lifelong friends.

Grand Canyon University's Office of Housing Operations is here to help you make a seamless transition to campus life. Our hope is that this guide will answer any questions you have about living on campus — from residence hall setup and housing policies to the application process and selecting a room. If you have questions, contact your admissions counselor or the Office of Housing Operations.



**GCU Campus Life:
THE EXPERIENCE IS
UNLIKE ANY OTHER!**

NOTE TO PARENTS:

Having your child move away for the first time can be somewhat bittersweet. You're excited for them to start on their new adventure as an independent adult, but you still worry about their safety and wellbeing. But you can rest assured that GCU's community takes student security very seriously and our standards and infrastructure reflect that dedication. GCU has over 170 security guards and Arizona Peace Officers Standards and Training (AZPOST) certified peace officers and GCU Public Safety (GCUPS) guards are on duty 24/7. We believe that our campus is a secure place for your student to call home as they ease into autonomous living.



NEW STUDENT CLASSIFICATIONS

To live in the incoming residence halls, you must be:

NEW STUDENT (AGES 17 – 19)

- A minimum of 17-years-old at the start of the academic term and under 20 years old on Dec. 31, 2022
- Registered as a full-time undergraduate student (12 or more credits, at least eight of which must be taken on campus)

NEW STUDENT (AGES 20 – 25)

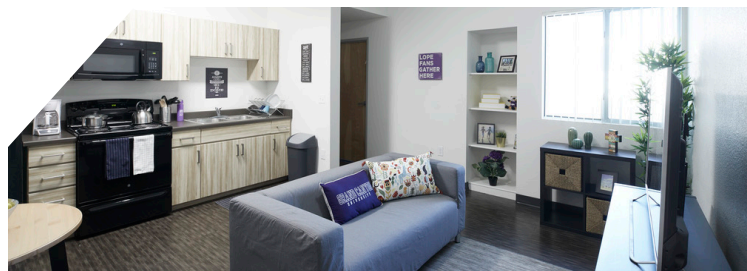
- Be a minimum of 20-years-old by Dec. 31, 2022 and younger than 26-years-old at the start of the academic term
- Registered as a full-time undergraduate student (12 or more credits, at least eight of which must be taken on campus)



ON-CAMPUS HOUSING AT GCU

Grand Canyon University (GCU) offers suite-style accommodations in all of our living areas for both new and returning students.

Visit [gcu.edu/housing](https://www.gcu.edu/housing) to learn about your housing options, important dates and policies, applying for housing and what to expect when you move in.



SUITE-STYLE LIVING OPTIONS: SINGLE, DOUBLE AND TRIPLE OCCUPANCY

WHAT MAKES GCU ON-CAMPUS LIVING UNIQUE?

- Affordable and attractive accommodations
- Laundry facilities on each floor
- No communal bathrooms
- Open lobby for community
- Outdoor courtyard for student activities
- Suite-style living

Student Spotlight

Student Name: Grace Henson
Resident Building: Saguario Hall

Describe your overall experience living on campus:

I made so many friends and felt very welcomed. Saguario felt like home for me for eight months. Living on campus is such a great way to get connected to community! I met some of my best friends living in the grove freshman year. It is almost impossible to be lonely while living on campus where there are so many opportunities to meet people.

Do you have a favorite place to hang out on campus?:

The Student Union GCBC is my favorite place to do homework and hang out with friends. And Mr. GCU, Lip Sync Battle and the Gathering on Tuesday nights are some of my favorite can't-miss activities!

SINGLE OCCUPANCY SUITE-STYLE APARTMENTS

Student will have their own bedroom but will share a bathroom with one other student. Includes kitchen equipped with refrigerator, freezer, oven and electric range top and microwave.



Single Occupancy (shared by four students)

SUITE-STYLE RESIDENCE HALLS

Double And Triple Occupancy

Students share a bedroom and bathroom with one to two direct roommates and share the entire space with two to three suitemates, depending upon their occupancy selection. Double occupancy suites are shared by four students and triple occupancy suites are shared by six.



Double Occupancy (shared by four students)

Double Occupancy (shared by four students)

Student will share a bedroom with one direct roommate. If a student's suite has two bedrooms (most do), that student will have one roommate and two suitemates (four total occupants).



Triple Occupancy (shared by six students)

Triple Occupancy (shared by six students)

Student will share a bedroom with two direct roommates. There is a limited number of triple occupancy rooms available. Rooms are the same size as double occupancy rooms and provide furniture including a loft bed, extra dresser, desk and chair.

Room and board rates start at just \$3,525 per semester

*Based on suite-style, triple occupancy room plus residence hall minimum meal plan (Canyon \$1,450 Dining Dollars per semester), plus applicable sales tax as required by state law. Prices reflect 2022-23 proposed rate and are subject to change.

ROLES

RESIDENT DIRECTOR

Resident directors (RDs) are full-time, professional live-in staff members who provide leadership and supervision for the resident assistants.

RESIDENT ASSISTANT*

Resident assistants (RAs) are student leaders hand-picked by the Residence Life staff to serve in every living area to help foster community, create accountability for university living area policies and act as a resource to residential students.

LIFE LEADER*

Life leaders are students within each living area who serve as a resource, offering support and spiritual formation opportunities for residents.

PUBLIC SAFETY

Our Public Safety team is made up of real police officers and GCU Public Safety employees, including a large team of student workers. By working together, they provide assistance to students and ensure our campus is safe 24 hours a day, seven days a week.

FACILITIES

Our amazing facilities employees keep our large campus beautiful. Students are able to put in requests to the facilities department to repair anything in their room or suite that breaks throughout the year. Facilities also keep our classrooms and common areas clean.

*Returning students can apply for RA and Life Leader scholarship positions.



2022-23 NEW STUDENT HOUSING

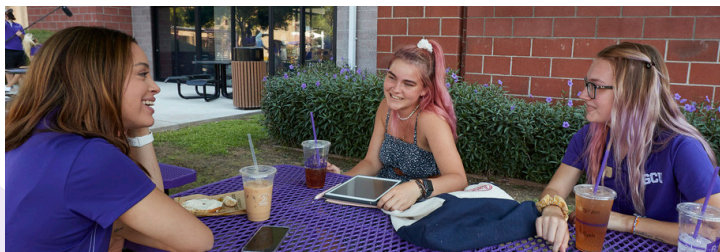
FOR BEST SELECTION

- 1) Register for classes
- 2) Upload your immunizations
- 3) Visit gcu.edu/housing for housing application deadlines and guide
- 4) Pay housing application fee (\$250 non-refundable) within the housing application as early as possible

All housing communications will be sent EXCLUSIVELY through GCU email. Make sure you check it regularly so you stay on track!

EATING ON CAMPUS

There are multiple locations around campus to enjoy delicious grub and satisfy your cravings, including the Student Union, Lopes Way and Thunderground, a place to unwind and hang out with friends that features games, bowling, food and live music. We proudly offer healthy options and lighter fare, including sandwiches, juices and smoothies, soups, salads, wraps and more.



Arena Café	Herd Stop	Purple Greens
Canyon 49 Grill	Jamba Juice	Qdoba
Canyon Corner Store	Kaminari	Subway
Canyon Pizza Company	Lopes Mart Stores	Sweet Disciple
Chick-fil-A	Lopes Training Table	Taco Bell
Einstein Bros. Bagels	Nekter Juice Bar	Taco Thunder
Farmer's Market	Panda Express	The Grid
Fresh Fusion	Panera	The Habit Burger Grill
GCBC Coffee	Pita Jungle	

Visit gcu.edu/mealplans to learn more.

HEAR IT FROM GCU STUDENTS:*

90% say that they can always find the type of food they want

80% appreciate the availability of healthy food on campus

85% are happy with our vegetarian options

76% are very satisfied with the value of on-campus dining

Self-reported through a campus survey Hear it from GCU students.

SAFETY

Campus safety is a top priority and GCU takes every step to protect the GCU community and our properties 24/7, starting with the Department of Public Safety. Our safe, tight-knit community is patrolled by the Grand Canyon Police Department.

We have various systems in place, including:

- An incident reporting system (TIPS)
- A safety escort service
- Emergency blue light phones
- R.A.V.E emergency text notification
- AlertGCU for communicating time-sensitive information during an emergency and much more

Visit gcu.edu/PublicSafety for additional information.

COVID-19

GCU has taken a number of measures to prevent the spread of COVID-19. For the latest updates on our COVID-19 policies, visit gcu.edu/Covid

PARKING ON CAMPUS

GCU provides plentiful parking nearby your living area at an economical price. For your convenience, parking permits may be purchased online at gcu.thepermitstore.com



For any other questions or assistance in purchasing a permit, call us at 602-639-7739 or send an email to CampusParking@gcu.edu



Scan for more parking information.

PERMIT PRICING

Permit prices are for the whole school year.
Parking garages: \$250.00¹
Motorcycle permits: \$150.00

If you will not be parking on campus for the entire year, you may request a partial parking fee refund.

¹ Parking fee is \$250 per academic year and charged in the Fall semester. Students starting in the Spring semester are charged a pro-rated fee of \$125. Motorcycles will be \$150 per academic year or \$75 per semester if prorated.



Scan for more housing information.



PACKING GUIDE AND MOVE-IN TIPS

The items listed below are commonly overlooked and are not provided to resident students by GCU. Please carefully review the list so that you are properly prepared when you arrive to campus.

WHAT TO BRING:

- Bedding (extra-long twin bed sheets, pillows, blankets, etc.)
- Cleaning supplies (all-purpose cleaners, vacuum, paper towels, dish soap, etc.)
- Hand sanitizer
- Laundry detergent
- Plunger
- Toilet paper
- Toiletries (body soap, shampoo, towel, etc.)

DO NOT BRING:

- Alcohol, drugs and associated paraphernalia
- Open heating sources (candles, incense, space heaters, etc.)
- Personal beds or mattresses
- Unapproved pets
- Vapes and e-cigarettes

QUICK TIPS FOR MOVING TO CAMPUS:



Be Prepared – Label your belongings with your first and last name and room number. Familiarize yourself with the furniture already in your room – you'll probably need less than you think!



Plan for Your Space – You will have one (1) 20-foot-long parking space in front of your building. Only one vehicle will be given curbside access to the building.



Print Your Move-In Voucher – Access your voucher in the Housing Portal, print it out and place it in the windshield of the car you plan to take to your building.



Arrive on Time – If you arrive too late or miss your move-in appointment, you will have to select a new one from limited remaining options.



Be Present at Check-In – Roommates or family members cannot check in on your behalf.



Make Unloading Easy – GCU staff and students will be there to greet you, but you are encouraged to bring people to help you move in.



We also recommend that every resident student obtains renters insurance. Please make sure to review Residence Life's full list of items to bring and leave at home at [gcu.edu/ResidenceLife](https://www.gcu.edu/ResidenceLife)



STUDENT CARE



COLLEGE IS AN EXCITING TIME OF LIFE-CHANGING EXPERIENCES!

Although you're likely to create some amazing memories here, it's normal to experience situations that can be difficult to navigate.

The Office of Student Care offers the following services:

- Brief Solution focused individual counseling
- Crisis Services
- Group Therapy
- Referral services

➤ Our office is open Monday through Friday, from 8 am – 5 pm, with after-hours availability provided through the GCU Public Safety/EMPACT crisis line at **602-639-8100**

➤ For further information on our services, call **602-639-7007** or email **studentcare@gcu.edu**

CANYON HEALTH AND WELLNESS CLINIC:

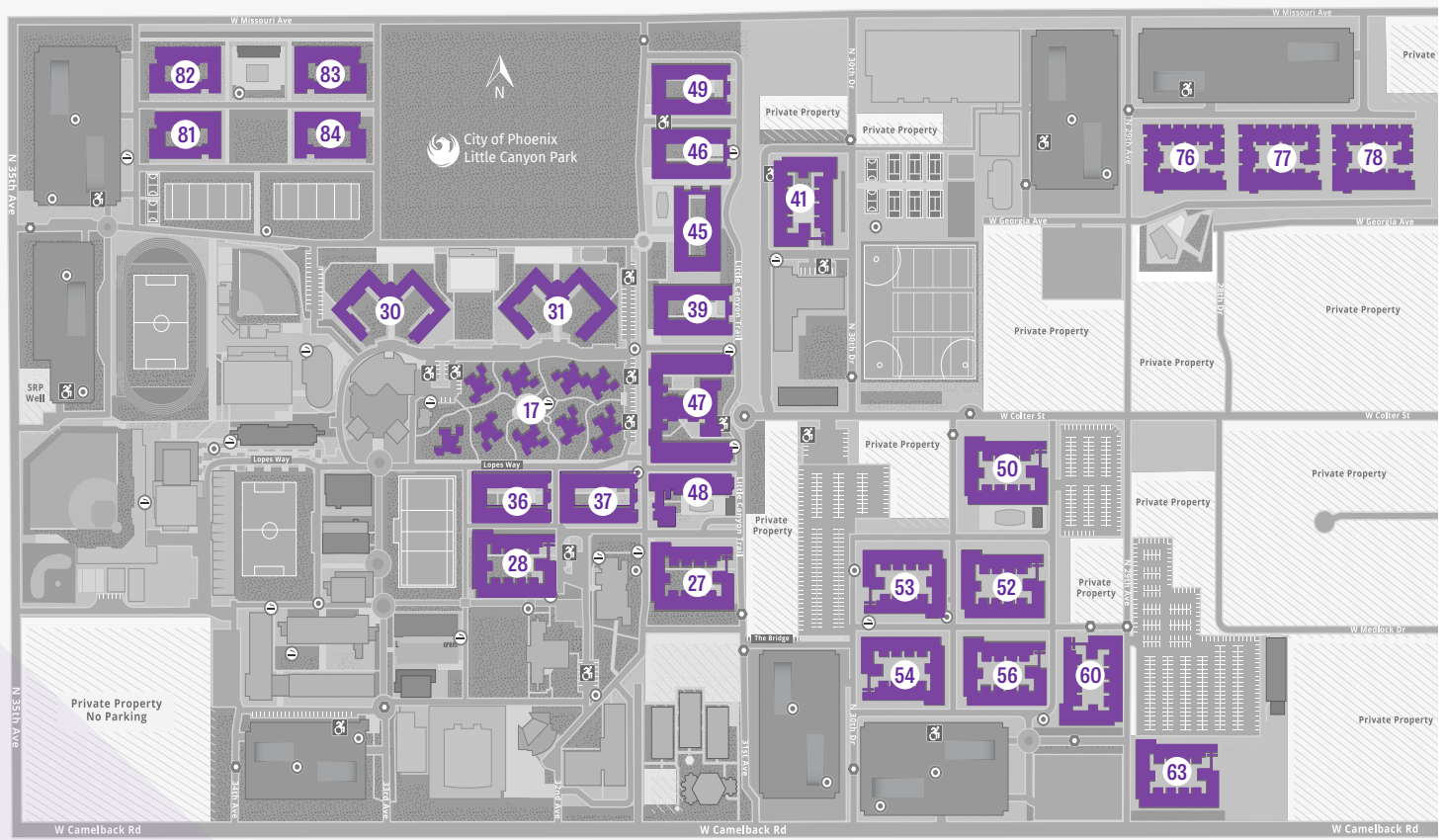
Canyon Health and Wellness clinic provides students, staff and faculty with top-quality healthcare services. Board-certified nurse practitioners see patients and provide care to the GCU campus community by offering health services such as performing physicals, treating illnesses and delivering holistic, individualized care to all of our campus students and staff.

SERVICES

- Blood and lab work
- COVID-19 testing
- Health checks
- Medicine prescriptions
- Women's health services

Check with your insurance provider to determine if your medical and dental plan covers care in Arizona.





CAMPUS HOUSING MAP


- | | | |
|--|------------------------------|--|
| ACACIA HALL (82) | ENCANTO APARTMENTS (27) | PRESCOTT HALL (36) |
| AGAVE APARTMENTS (41) | IRONWOOD HALL (83) | ROADRUNNER APARTMENTS (28) |
| AGUA FRIA APARTMENTS – THE RIVERS (76) | JEROME APARTMENTS (54) | SAGUARO HALL (46) |
| ANTELOPE APARTMENTS (52) | JUNIPER HALL (84) | SALT RIVER APARTMENTS – THE RIVERS (77) |
| CACTUS APARTMENTS (53) | NORTH RIM APARTMENTS (17) | SEDONA HALL (39) |
| CAMELBACK HALL (37) | OCOTILLO HALL (49) | SONORA APARTMENTS (56) |
| CANYON HALL (31) | PALO VERDE APARTMENTS (60) | VERDE RIVER APARTMENTS – THE RIVERS (78) |
| CHAPARRAL HALL (45) | PAPAGO APARTMENTS NORTH (47) | WILLOW HALL (81) |
| CYPRESS HALL (30) | PAPAGO APARTMENTS SOUTH (48) | |
| DIAMONDBACK APARTMENTS (50) | PONDEROSA APARTMENTS (63) | |



NEXT STEPS:

- STEP 1** *Register for classes*
- STEP 2** *Upload immunizations through the student portal*
- STEP 3** *Submit housing application (\$250 non-refundable)*
- STEP 4** *Select housing during your assigned timeslot*
- STEP 5** *Get to know your roommate*
- STEP 6** *Select move-in appointment (July)*
- STEP 7** *Print move-in voucher (August)*
- STEP 8** *Move-In during Welcome Week*

Questions? Contact your university admissions counselor or Housing Operations at **602-639-6240** or **housing@gcu.edu**



To learn more about Grand Canyon University, undergraduate programs offered on campus, available scholarships and more, contact a university admissions counselor.

855-428-7884
gcu.edu/CampusAdmissions

Grand Canyon University is accredited by the Higher Learning Commission (hlcommission.org), an institutional accreditation agency recognized by the U.S. Department of Education. Please note, not all GCU programs are available in all states and in all learning modalities. Program availability is contingent on student enrollment. Pre-licensure nursing students who begin or resume attendance in Fall 2020 and beyond will be ineligible to utilize most GCU institutional aid/scholarships for tuition and fees once accepted into the clinical portion of the program. Important policy information is available in the University Policy Handbook at <https://www.gcu.edu/academics/academic-policies.php>. The information printed in this material is accurate as of JUNE 2022. For the most up-to-date information about admission requirements, tuition, scholarships and more, visit [gcu.edu](https://www.gcu.edu). ©2022 Grand Canyon University 22GTR0366