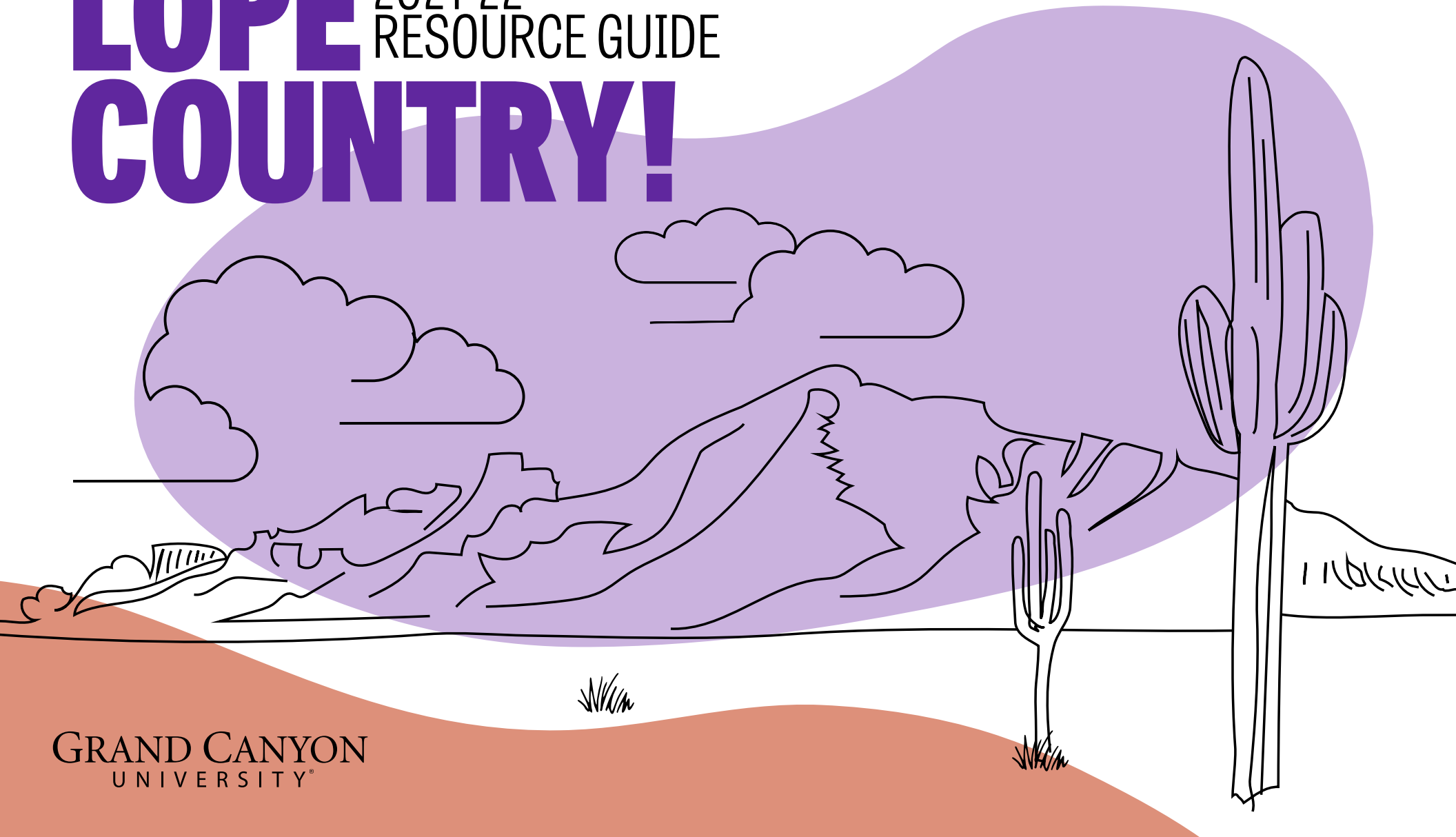


WELCOME TO LOPE COUNTRY!

2021-22
RESOURCE GUIDE

GCU
WELCOME PROGRAMS



GRAND CANYON
UNIVERSITY®



welcome to
lope country!

TABLE OF CONTENTS

WELCOME TO LOPE COUNTRY!

- 3. Welcome Lopes
- 4. Welcome Programs
- 5. Parent and Family Programs

ACADEMICS

- 6-7. Academic and Career Excellence
- 8. First Year Experience
- 9. Electronic Resources (Student Portal, Halo | Learn, Canyon Connect)
- 10-11. On-Campus Research Opportunities

SAFETY AND WELLNESS

- 12. Student Care
- 13. Public Safety
- 14. Health and Wellness

LIVING IN COMMUNITY

- 15. Housing Operations
- 16-17. Residence Life
- 18. Commuter Life

GETTING INVOLVED

- 19. ASGCU President's Letter
- 20. Student Engagement
- 21. Diversity and Inclusion
- 22-23. Spiritual Life
- 24. Veterans Center/ROTC
- 25. Campus Recreation
- 26. Club Sports
- 27. Havocs

CAMPUS RESOURCES AND PHOENIX ATTRACTIONS

- 28-29. GCU Apps! (Student App and GCU Engage App)
- 30-31. Student Employment
- 32. Mail Services
- 33. GCU Dining Options and Meal Plans
- 34. GCBC and Canyon 49 Grill
- 35. Local Attractions
- 36-37. Local Lodging and Eateries
- 38-39. Campus Map
- 40. Student Affairs Leadership
- 41. Connect on Instagram!

GCU DIRECTORY

Welcome Lopes!

WELCOME TO LOPE COUNTRY — our vibrant and life-changing student community here at Grand Canyon University! As you begin your GCU journey, you are entering a season of adventure and being called to something greater than you could imagine. During these coming years, my hope is that along with advancing your education, you embark on a spiritually uplifting experience full of new opportunities. At GCU, we encourage you to live a life of purpose by engaging in student-led events and programs and connecting to our welcoming student community.

You are taking the next steps in your journey of discovering your unique purpose and fulfilling the plans that God has in store for you. I encourage you to be open to issues of faith and intentional in building a solid foundation of trust and hope. You will be amazed at how God will use you to make an impact on campus, at home and throughout the world.

When students start at GCU I tell them to “go to everything.” I encourage you to have fun as you make friends and participate in the numerous student-led opportunities around campus. There are hundreds of programs throughout the year to intentionally create an engaging student community—including campus-wide events, life groups, community gatherings, Chapel services, volunteer programs, recreational trips, student clubs and more. No matter if you live on campus or commute, these programs are for you!

One of our greatest joys at GCU is fostering an atmosphere of unity among students, staff, faculty and guests. We admire the example set by our own students when it comes to including their fellow Lopes by encouraging others to pursue their passions, achieve their goals and use their unique gifts to serve each other and the surrounding community. We are honored that you have chosen to join us in this mission.

Lopes Up!

Tim Griffin, EdD
Vice President of Student Affairs
Dean of Students/University Pastor

**I LOOK FORWARD TO STARTING THE
2021-22 SCHOOL YEAR TOGETHER
AND CAN'T WAIT FOR YOU TO JOIN
US IN LOPE COUNTRY!**

**“OUR JOY AT GCU IS FOSTERING
AN ATMOSPHERE OF UNITY
AMONG STUDENTS, STAFF,
FACULTY AND GUESTS.”**



Welcome Programs

The Department of Welcome Programs works collaboratively with campus partners to serve incoming and new students and families through an orientation and transition process that builds connection to campus life. We host New Student Orientation and Welcome Week, but we're also here to help with your transition into college life and make sure you make friends and find your unique niche here at GCU. If you want to learn more about getting connected and involved on campus, there are many ways we help.

HOW TO GET CONNECTED:

- 1. PUT YOURSELF OUT THERE:** Attend CAB events and athletic games, hang out with your resident assistant (RA) or life leader and strike up conversation with people in your class! There are many opportunities to meet people at GCU.
- 2. FILL OUT THE CONNECTION FORM:** Still having trouble making friends? We get it, we've been there too! Fill out the New Student Connection form on the GCU Engage app and a welcome pro will reach out to you to help!
- 3. TEXT US:** Have questions about GCU life? Text **602-639-6002** with your question and we will get back to you shortly (Monday – Friday from 8 am – 5 pm).

WELCOME PROS

The welcome pros are a team of experienced GCU student leaders who are passionate about your first year experience. **They serve as connection experts to help get you plugged into campus life.** Depending on your communication preference, they will connect with you over text, a phone call or a cup of coffee to learn about your hobbies and passions to figure out how you can apply those at GCU!

Parent and Family Programs



Parents and Families! Want to know more about Family Homecoming Weekend and parent and family programs? Please refer to the Parent and Family Resource Guide for more details.

Visit gcu.edu/Family



GCU
WELCOME PROGRAMS



Academic and Career Excellence (ACE)

COLLEGE KICK-OFF

Attend your College Kick-Off to meet your professors, dean and college staff!

College Kick-Off Checklist:

- ☐ Attend your College Kick-Off during the first few weeks of the semester (this is an assignment for most UNV courses)! Check the GCU Engage App for your college's updated times and locations.
- ☐ Introduce yourself to at least one professor at the college event.
- ☐ Take away one piece of information that you learned from your dean's presentation.
- ☐ Sign up for at least one student club or learning community that interests you.

UNIVERSITY SUCCESS COURSE

The university success course is a four-credit class, traditionally taught online. Your university success course provides tools that contribute to establishing a strong academic foundation for GCU learners. These courses review topics such as:

- Navigating the learning management system, Halo | Learn in all classes
- Searching the online GCU library and ask a librarian for assistance
- Correctly citing a journal article
- How to best manage your time
- Gauging your financial health while in college

On your first day of class, remember to:

- Log in to your university success course in Halo | Learn and post your bio information
- Post in the discussion forum for all classes
- Reach out to First Year Experience (see page 8 for more information) if you need assistance

ACCESS HALO | LEARN

Navigate to the GCU Student Portal and click the link for your course to be signed in automatically. Alternatively, use the direct link below to log in with your GCU email address and the same password used to access the Student Portal. halo.gcu.edu

MEET YOUR SSC

During the semester, you will be required to attend one mandatory appointment with your student services counselor (SSC). Your SSC takes over for your admissions counselor once you are on campus at GCU. They can help you coordinate your schedule, remind you about payment deadlines and more throughout your time here!

At your appointment, you will:

- Discuss financial clearance
- Review your schedule
- Talk about your current classes and your experiences on campus
- Go over other academic or financial concerns
- Schedule follow up appointments if needed

REMINDERS:

- Late Payment Fee: \$25 per month
- Schedule Change Fee: \$50 per change (no financial penalty if change is at least two weeks prior to the start of the semester)

CONTACT YOUR SSC:

You can find their phone number and email in your Student Portal or visit the Student Advising Center Building 18, 2nd floor, Monday – Friday 8 am – 5 pm.

EXPLORE THESE ACADEMIC AND CAREER RESOURCES!

ACE ADVISORS: Your ACE advisor can help guide you with your Purpose Plan, which is your yearly checklist for success related to academics, career development and spiritual engagement. They'll also support you with anything from picking a major and honing your time management skills to picking a learning community and preparing for an internship.

AFTER DARK SESSIONS: LEADs focus on content-specific and major-specific content for large groups in special sessions at **Humanities and Social Sciences Building 16, 1st Floor** from 8 pm – midnight.

CAREER COMPASS: This online self-assessment tool measures your interests, preferences and skills, then suggests degrees and career paths based on your responses. It is accessible on the Student Success Center.

CAREER CONNECTIONS: Utilize this platform to schedule academic and career support appointments, create your professional profile, apply for on and off-campus jobs and internship positions and follow your yearly Purpose Plan to stay on track toward your goals.

GCU LIBRARY: Visit the 3rd and 4th floors of the Student Union for study rooms, computers, printers and anatomical models. Start exploring the GCU Library's extensive collection of databases and resources which provide access to journal articles, ebooks, dissertations, research guides, streaming video and music, all available 24/7 from the GCU Library's website. library.gcu.edu

ENGLISH LANGUAGE LEARNER'S (ELL) CENTER: If English is not your first language and you need extra help with writing, understanding assignments or extra grammar instruction, the ELL Center is for you! We can help you with grammar, sentence structure, organization, formatting, brainstorming, word choice, APA format, transitions, research and more. Our goal is not to edit your work but instead help you learn how to find and fix mistakes for yourself.

Education Building 33, 2nd Floor

EXPLORE MORE SESSIONS: These sessions help with challenging coursework and subjects. Refine your writing skills, understand economics, explore the Christian worldview and more! Learn more at gcu.edu/ExploreMore

FIRST YEAR EXPERIENCE: This is your roadmap to learning important strategies for success and connecting with different resources on campus. Connect with FYE LEADs for guidance with transitioning to university academics. Stop by our FYE ACE Center in **Willow Hall, Building 81** and follow us on **Instagram @FYE ACE**.

MATH CENTER: Full-time faculty and instructional assistants can help with math concepts and skills in one-on-one or small group settings during the academic year. **Humanities and Social Sciences Building 16, 2nd Floor**

ONE-ON-ONE LEAD APPOINTMENTS: Work with an Academic LEAD for course-specific support. Schedule your appointment in Career Connections.

PURPOSE PLAN: Your plan serves as a guide to ensure you fulfill requirements, meet deadlines and maximize your GCU academic experience. Review your Purpose Plan from your UNV course with any GCU ACE Advisor.

SCIENCE CENTER: Stop by the Science Center for walk-in one-on-one and small group support for chemistry, biology, physics and engineering! **Natural Sciences Building 6, Room 103**

STUDENT SUCCESS CENTER: Located in Halo | Learn and through the Student Portal, this resource assists with academic needs, including writing, test-taking strategies, taking notes more effectively, time management, study tips and more. View the details at gcu.edu/StudentSuccessCenter

WHAT CAN I DO WITH THIS MAJOR? This is an online resource for students to learn about what majors can lead to what careers and in what industries. It's available on the Student Success Center.

WRITING CENTER: Meet with English faculty or instructional assistants for one-on-one feedback on written assignments. The online Writing Center offers tools to help you complete written course assignments and learn writing guidelines and requirements to improve overall writing skills. **Education Building 33**



First Year Experience (FYE)

Your first year can be challenging and it is common to feel overwhelmed when making the transition to college. It's hard enough learning how to be a successful student, let alone trying to get involved and discover all of the opportunities that are available to you! This FYE roadmap is available to help you gain strategies on how to be a successful student and connect with all of the resources on campus.

STOP BY THE FYE ACE CENTER ON THE FIRST FLOOR OF WILLOW HALL BUILDING 81 IF YOU HAVE QUESTIONS FOR AN FYE LEAD OR JUST NEED A QUIET PLACE TO STUDY!

Week One:

POST IN HALO | LEARN. Check to see if you have an online course as well. You can access Halo | Learn by logging in to your Student Portal at [GCUPortal.gcu.edu](https://gcuportal.gcu.edu)

READ YOUR SYLLABUS for each class, mark important due dates on your calendar, note your faculty's office hours and order printed textbooks for your classes that do not include e-books: canyonconnect.gcu.edu

INTRODUCE YOURSELF to your faculty members.

VISIT THE WILLOW HALL FYE ACE CENTER to get informed about the extensive free support they offer across multiple subjects.

Week Two:

SET A GPA GOAL that you hope to achieve by the end of your first semester.

CREATE A WEEKLY STUDY PLAN for each of your classes. Ask yourself how much time and effort you need to commit to each class outside of the classroom in order to ensure success.

VISIT THE STUDENT AFFAIRS WEBSITE and learn about the vast array of exciting opportunities available to you! Learn more at students.gcu.edu/student-affairs

FORM PEER STUDY GROUPS for your challenging courses or join a learning community.

Week Three:

TAKE ADVANTAGE OF EXPLORE MORE to enhance your learning outside of the classroom with subject matter experts: gcu.edu/ExploreMore

ATTEND COLLEGE KICK-OFF. Check GCU Engage App for times, locations and dates of your week three College Kick-Off. Meet your dean, professors and other students from your college.

MEET WITH AN FYE LEAD. Log in to Career Connections to schedule a meeting with your FYE LEAD to learn about academic and career resources.



HELPFUL HINT

To schedule FYE LEAD appointments:
Visit the FYE website at gcu.edu/fye
Click "Semester Roadmap"
Read the Weekly Objectives

After Dark Series

UNV: Tuesdays at 8 pm
FYE: Thursdays at 8 pm
Follow [@FYE_ACE](https://www.instagram.com/fye_ace) on Instagram for details

Electronic Resources

GCU STUDENT PORTAL

Access resources such as Career Connections and the Student Success Center, track tuition payments and housing information, as well as access your schedule and other student resources such as transcripts within your Student Portal: GCUPortal.gcu.edu

HALO | LEARN

Our innovative learning management system tracks your educational activities and offers resources such as writing assistance, test-taking information and time management guidance. You can turn in assignments Halo | Learn, participate in discussions and more.

ACCESSING YOUR DIGITAL TEXTBOOKS AND COURSE CONTENT

You'll find all of your required course materials online for your classes on Canyon Connect. These may include print and digital textbooks, video simulations, required software and more!

Follow these easy steps to order your textbooks:

1. Go to canyonconnect.gcu.edu
2. Enter your classes, separated by a comma, in the box labeled Step 1. Choose "Ground Traditional Campus" from the box labeled Step 2.
3. The right-hand column will let you know the format your textbook is available in: print, digital or no text required.

To purchase a print format textbook:

1. Search the ISBN number.
2. Order your textbook from the online retailer of your choice (Examples: Follett, Amazon, Barnes & Noble, Chegg and more).



Contact
support.gcu.edu
with any questions!



On-Campus Research Opportunities

THE HONORS COLLEGE

ABOUT: The GCU Honors College offers an academically enriching opportunity to bright, passionate, ambitious and motivated traditional students who are interested in experiential learning opportunities related to service and leadership. As part of the GCU Honors College, you will be challenged on an individual basis through extracurricular activities and one-on-one mentoring opportunities with a faculty member so you will be equipped to move on to the next chapter in your life.

BENEFITS: Honors College students have access to more than 260 honors courses, seven different honors clubs and organizations, exclusive domestic and international travel programs, four signature annual events, professional and leadership development programming, project and research-based programs, additional mentorship and student support resources.

To learn more about Honors College resources, visit gcu.edu/honors or email GCUHonors@gcu.edu.

RESEARCH AND DESIGN PROGRAM (RDP) Through the College of Science, Engineering and Technology

ABOUT: The RDP program offers hands-on, mentored training experiences in science, engineering and technology. Students are expected to contribute directly to current research and design projects being led by faculty while learning techniques and methodologies.

To learn more, contact Jon Valla at jon.valla@gcu.edu.

LOPES LIVE LABS (L3)

Collectively these applied learning labs represent on-campus locations where students learn, gain access to industry opportunities and experience their education coming to life. These hands-on opportunities are unique to GCU and go beyond the classroom, allowing students to engage in activity and apply what they learn.

Engineering Building 1

- BioMed Device Development
- Lopes Labs
- Engineering Shops

Natural Sciences Building 6

- Nursing Immersive Simulations
- Forensic Science Research Lab

Humanities and Social Sciences Building 16

- Writing Center
- Math Center
- English Language Learning Centers

Ethington Theatre Building 21

- Performing Arts

Roadrunner Apartments Building 28

- GCBC

Student Union Building 29

- GCBC

Education Building 33

- Lopes for Literacy Multicultural Library
- College of Education Lab Classroom

Fine Arts and Production Building 35

- Design United
- Recital Hall
- Black Box Theatre
- Music Practice Studios

Colangelo Building 42

- Schwab Finance Center

Chaparral Hall Building 45

- Athletic Training

Saguaro Hall Building 46

- Digital Film
- Dance Studio

Technology Building 57

- Esports
- Computer Science Collaboratorium
- Coding Labs
- Cadaver Labs
- Cyber Center of Excellence
- Lopes Cloud
- Audio Recording Lab
- Honors Collaboration Center

- Exercise Science POWER Lab
- Health Information Programming (HIP) Clinic
- RDP Research Labs

Canyon Activity Center Building 58

- Band Room

Canyon Ventures Center Building 66

- Canyon Ventures
- Doctoral Residency Experience

Hospitality Properties Building 68

- Canyon 49 Grill
- GCU Hotel

Grand Canyon Education Building 71

- GCU Ad Agency

29th Avenue Parking Garage

- Canyon Promotions

GCU Golf Course

- Located on 59th Avenue and Indian School



Student Care



We create amazing college experiences for our students at GCU, but we also understand how different challenges can affect happiness, health and wellbeing. We want our Lopes to live well and know that you are not alone in your struggles. It's okay to ask for help! Campus resources and professional support are available to impart you with guidance and tools for living happily and healthily.

The Department of Student Care promotes the mental health and psychological wellbeing of GCU traditional campus populations through offerings such as:

- Psychoeducational workshops
- Group counseling (*examples include anxiety, relationships, resiliency and coping skills*)
- Short-term, solution-focused individual counseling
- Crisis counseling
- Referral to outside community counseling resources

ALL COUNSELING SERVICES OFFERED WITHIN THE OFFICE OF STUDENT CARE ARE FREE OF CHARGE AND ARE OFFERED ON A FIRST-COME, FIRST-SERVED BASIS.

Follow these steps to access Student Care services:

1. VISIT THE DEPARTMENT OF STUDENT CARE IN THE STUDENT LIFE BUILDING 26, ON THE 2ND FLOOR — WE'RE OPEN MONDAY – FRIDAY FROM 8 AM – 4:30 PM

2. FILL OUT OUR INFORMED CONSENT DOCUMENTATION

3. GIVE COMPLETED DOCUMENTATION TO AN ADMINISTRATOR AND SCHEDULE A SAME-DAY CONSULTATION

4. SHOW UP FOR YOUR 30-MINUTE CONSULTATION AND DISCUSS YOUR TREATMENT PLAN WITH A LICENSED PROVIDER

Important Reminders:

- All clinical offerings are confidential and thus not releasable either via FERPA or as an educational record.
- If you or a loved one are experiencing a psychological emergency on campus, call the campus emergency line at **602-639-8100** and describe the nature of your concern and a mental health Wellness Check will be conducted immediately.
- We build in daily crisis availability into our scheduling, but in the event our office determines that a student requires more consistent and ongoing clinical support than can be provided under our scope of practice, the student will receive a listing of preferred community providers to pursue locally (including low-cost options).

Visit gcu.edu/StudentCare to learn more!

STUDENT LIFE BUILDING 26, 2ND FLOOR
STUDENTCARE@GCU.EDU
602-639-7007

Public Safety

The continued safety of students, faculty and guests remains GCU's top priority. Located in Grove Parking Garage Building 80, GCU's Public Safety Department (GCUPSD) guards are available 24 hours a day, 7 days a week. GCU Police are on-duty from 6 – 1:30 am, 7 days a week and Phoenix Police are on-call between 1:30 – 6 am, 7 days a week.

Public Safety also oversees parking operations! All students must register their vehicle and obtain the appropriate permit to park on campus.

Save time by purchasing your parking permit online at gcu.thepermitstore.com

WE OFFER THE FOLLOWING PUBLIC SAFETY RESOURCES:

EMERGENCY BLUE LIGHTS

We have over 70 emergency blue light phones located throughout campus.* These are outdoor phones that connect to a dispatcher 24/7. In addition to the outdoor blue light stations, there are also emergency phones in every student housing building.



RAVE ALERTS SYSTEM

In the rare case that there is ever an emergency situation on campus, notifications are sent via text message using the RAVE alert system. We also push notifications out to every network desktop computer and LCD display on campus to ensure our community takes immediate action. Students, faculty and staff are automatically entered into the RAVE system when they enroll as long as they have provided a valid cell phone number.

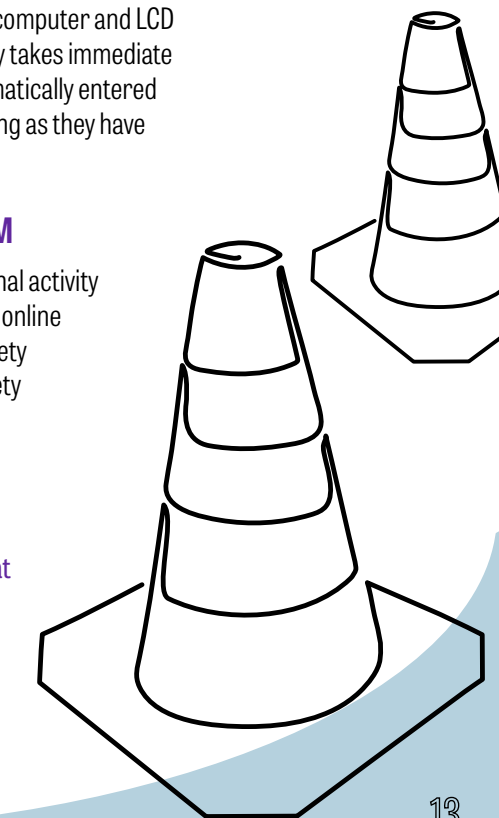
TIPS ANONYMOUS REPORT SYSTEM

Students can alert us anonymously of criminal activity or other concerning matters 24/7 using the online TIPS system. Tips are received by public safety dispatchers and followed up by campus safety guards and/or campus police. Visit gcu.edu/PublicSafety to submit a TIP.



You can contact PSD by phone at **602-639-8100**, by email at security@gcu.edu or by asking any Campus Safety Guard or Police Officer for assistance.

*As of July 2021



Health and Wellness

CANYON HEALTH AND WELLNESS CLINIC

Our goal at the Canyon Health and Wellness Clinic is to promote a healthy community at GCU by providing you with top-quality health care services. Board-certified nurse practitioners (NP) or our staff physician will see patients and provide care to the GCU campus community by offering services such as: performing physicals, treating illnesses and delivering holistic, individualized care to all of our campus students and staff.

Visit our clinic for:

- Sports, nursing or general physicals
- Illness diagnosis and treatment
- Urgent walk-ins with our NP triage
- Bloodwork
- IV hydration
- Select prescriptions
- EKGs
- Allergy injections
- Select vaccinations
- Medical equipment (such as crutches or braces)
- X-rays
- Dietician visits
- Orthopedic rehab
- And more!

Location and Hours:

Papago Apartments Building 47
Monday – Friday: 8 am – 5:30 pm
Weekends: Closed*

For appointments:

Call **602-639-6215**, walk in or schedule online at gcu.studenthealthportal.com
Appointments are highly recommended, walk-in requests for same-day appointments may not be available.

Health Care and Health Insurance Requirements

Before beginning classes at GCU, it's vital that you submit documentation for certain immunizations and confirm that your health insurance will work in Arizona. Visit gcu.edu/HealthCenter to ensure that you'll be covered once you arrive on campus!

STUDENT DISABILITY SERVICES (SDS)

The SDS Office provides accommodations and resources to students with disabilities. Disability issues include: physical, learning, emotional, mental health and temporary medical issues.

Papago Apartments Building 47
DisabilityOffice@gcu.edu
602-639-6342

* After Hours and Weekend Nurse Advice Line: **877-602-7217**

HOW TO PREPARE FOR HEALTH INSURANCE IN PHOENIX

How do I know if I need the student health insurance provided by GCU?

1. OUT-OF-STATE STUDENTS

Confirm your insurance works in Arizona by calling your current insurance carrier to ask what your plan covers while you are away at school in Arizona.

2. STUDENTS CURRENTLY WITHOUT COVERAGE

We are proud to offer a comprehensive student plan from United Healthcare.

3. INTERNATIONAL F-1 VISA STUDENTS

You cannot waive the student plan through United Healthcare.

Who is required to provide proof of coverage?

Students enrolled in any of the following programs or activities are required to provide proof of health insurance coverage.

- Athletic Training
- Club Sports
- Counseling
- Dance Education
- Division I Student-Athletes
- Pre-licensure Nursing
- Theatre
- Theatre Education

How can I provide proof of coverage?

Please fill out the waiver form located in your Student Portal to provide proof of insurance.

NOTE: Students who do not provide proof of insurance will be automatically enrolled in GCU's United Healthcare student health insurance and will be charged the premium. The deadline to provide proof of coverage for the fall 2021 semester is **Aug. 24** and the deadline for the spring 2022 semester is **Jan. 4**. Visit gcu.edu/HealthInsurance for more information.

Housing Operations

The Department of Housing Operations manages the housing reservations and logistical needs of both the incoming and returning residential community on campus. This includes the planning of living area allocation and growth, creation and maintenance of online housing selection processes and communication of accountability to housing policies and deadlines.

We provide student-centric, premier customer service by keeping students informed of housing opportunities and responsibilities, offering an efficient and intuitive housing selection process and empowering students to navigate housing needs and priorities. Striving for continual improvement of student service, processes and policies is paramount to Housing Operations.

Student Life Building 26, 2nd Floor

housing@gcu.edu
602-639-6240

Please visit gcu.edu/housing for the following:

- Important dates
- Housing costs
- Housing policies
- Housing selection info



TIPS FROM HOUSING:

Refer to gcu.edu/ImportantDates
Check and read your GCU email frequently!
Confused? Ask for help early!



LIVING IN COMMUNITY

Residence Life

The Department of Residence Life provides residential students with the opportunity to live and learn as part of on-campus communities led by our student leaders. We strive to help students living in university housing become Christ-like servant leaders through an awareness of self and engagement with others.

Student Life Building 26, 2nd Floor
602-639-6244 | ResidenceLife@gcu.edu

Resident Assistants (RA): Student leaders who live in your building and help to foster community, encourage health and safety and assist in building management.

Resident Directors (RD): Professional staff who have an office in the lobby of your building, lead the RA team and manage the building.

Community Gatherings: Small group monthly gatherings in your hall or floor.

Nervous about roommate issues? We are here to help!

Roommate relationships can be some of the most fulfilling of your college experience. However, discovering how to get along with new roommates in a small space will be challenging, especially if you have never shared a room before. Conflict is inevitable. Handling it effectively helps prepare you for successful relationships in college and beyond. We have a very specific, educational conflict resolution process that is used in campus housing university wide.

1: Talk about the conflict and create a plan for resolution

- Get a roommate communication verification form from your RA
- Set up a time to speak with your roommates
- Identify the issues and create an action plan
- Put the action plan into practice for seven days

2: Schedule a conflict resolution meeting with your RA

- If major conflict still exists after seven days, your RA will facilitate a mediation with you and your roommate
- The mediation will involve open and honest conversation
- Together, revise your roommate agreement and practice for seven days
- Schedule a follow up meeting with your RA

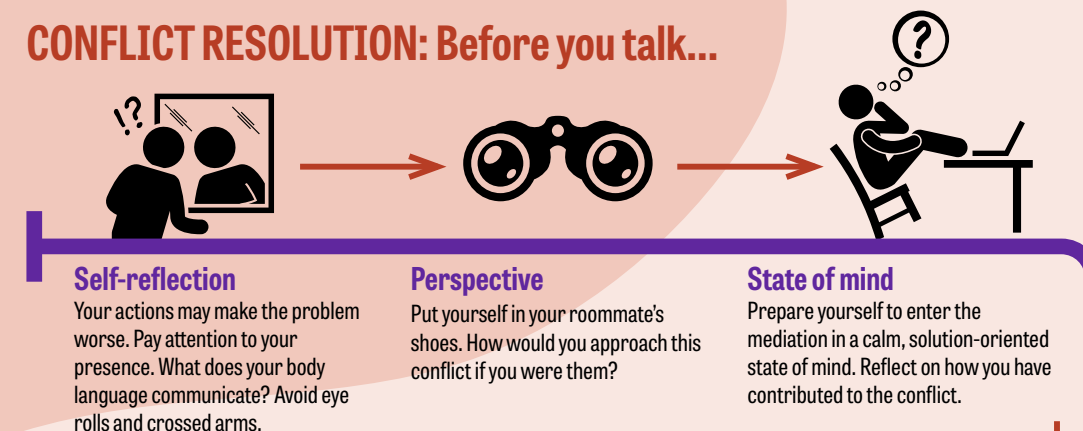
3: Schedule a conflict resolution meeting with your RD

- If severe conflict still exists after the follow-up meeting with your RA, your RA will recommend an RD mediation
- Your RD will email you to schedule a conflict resolution meeting
- Your RD will work with you and your roommates to determine the best course of action moving forward

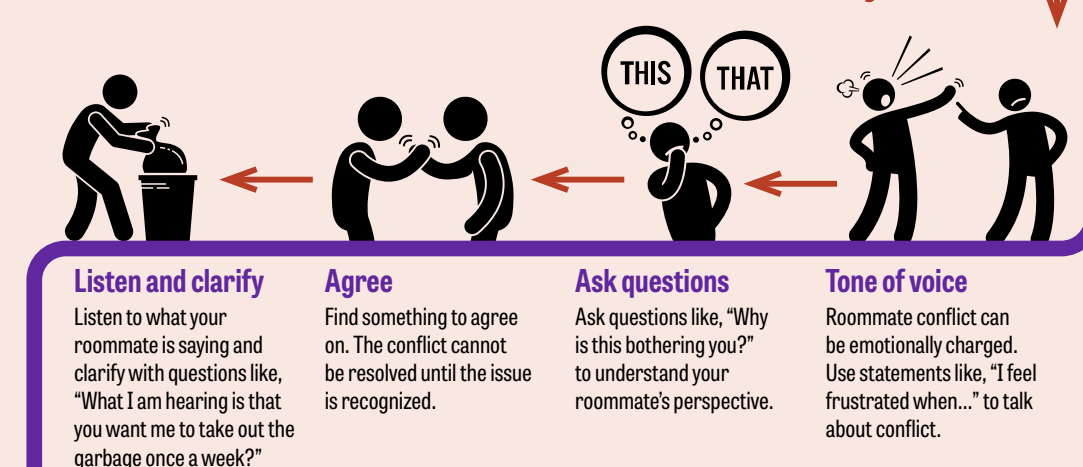
Want to know more about living on campus? Visit gcu.edu/ResidenceLife for the following:

- Roommate conflict resources and support
- Residence Life policies
- University Policies Handbook including community standards
- Residence Life appeals protocol
- Cable, internet and TV questions
- Laundry
- Mail
- Facility and furniture info

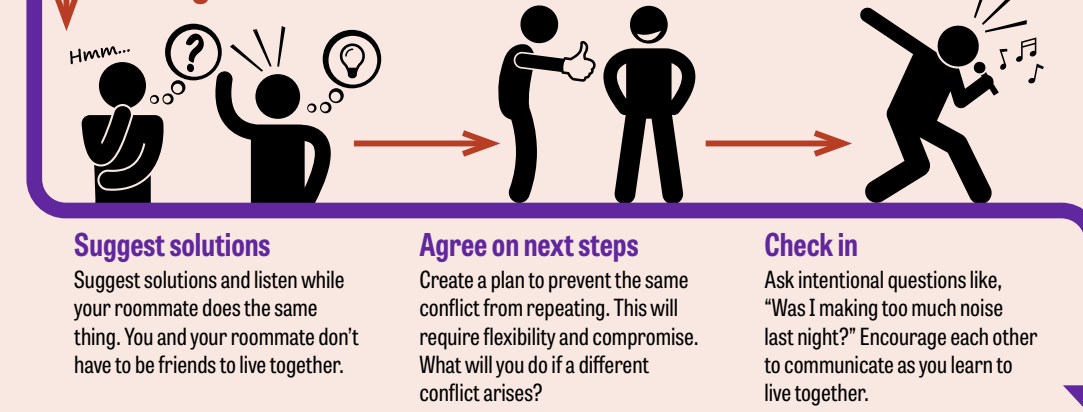
CONFLICT RESOLUTION: Before you talk...



When you talk...



Moving forward...



STUDENT CONDUCT

As part of Residence Life, we support the educational mission of the university by upholding the community standards. The student conduct process is a fair and informal educational process designed to promote an educational environment and develop students to be a part of the global community.

For more information about the community standards, visitation privileges, alcohol and drug policies and more, refer to the community standards in the University Policy Handbook.

Student Life Building 26, 2nd Floor
StudentConduct@gcu.edu
602-639-6244

CAMPUS TV

Visit gcu.edu/ResidenceLife for the following: movies, live sports and more – Cox Contour is on campus!

Did you know you have access to FREE content, available to you on any smartphone, tablet or laptop through Cox Contour?

To access your content, just follow these easy steps:

1. Download the Contour app from the App Store or Google Play and open the app.
2. Click the "Get Started" button and then click the "University Sign In" button at the bottom.
3. Select Grand Canyon University from the menu.
4. Log into Contour using your GCU credentials.

COX BUSINESS It's as simple as that! If you ever need assistance, simply go to support.gcu.edu or call 877-428-8447.

Commuter Life *Keeping you in the know, on the go*



As a commuter Lope, you are valued and we want you to thrive here. We invite you to participate in our vibrant commuter community featuring:

- Dedicated space for commuting students in the GCU Commuter Lounge
- Monthly socials, lunches and/or events in the Commuter Lounge
- Quiet study room located in the Commuter Lounge
- Student leaders dedicated to commuter services
- Monthly incentives for students who carpool or take alternate means of transportation to school

Feel at home on campus in our Commuter Lounge, located in Kaibab Building 25, equipped with:

- Free lockers (first-come, first-serve)
- Wi-Fi
- Register with Student Engagement
- Free coffee
- Refrigerators
- Couches
- Microwaves
- Work-study tables

CONNECT TO CAMPUS

We value our commuter students and want to make sure you have just as many opportunities, benefits and features as students who live on campus. In addition to our commuter-tailored events, every club, event and amenity on campus is for you too, including:



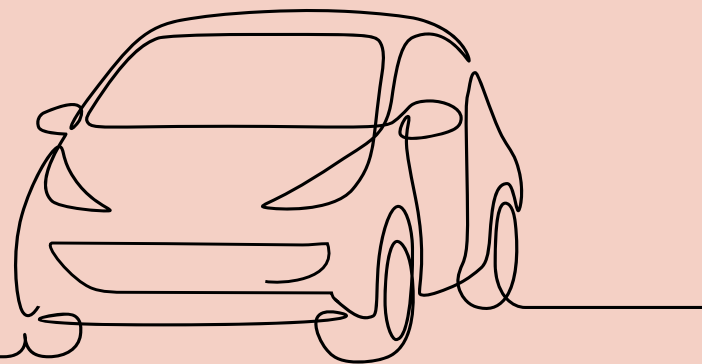
- A six-lane bowling alley and lounge area in Thunderground
- Resort-style swimming pools
- Fitness centers, Canyon Activity Center and rock-climbing wall
- Clubs and student organizations
- Spiritual Life life groups
- Division I athletic games
- Intramural sports, including flag football and sand volleyball
- Outdoor Recreation program trips
- Academic support, career services and Student Care

JOIN THE FUN!

Commuter students can enjoy events throughout the semester tailored to them, as well as events open to all of our traditional ground students. Every campus event is for you! From athletic games to movies on the lawn, campus events include Lip Sync, coffeehouses, pool parties, multicultural events, dances, DIY crafts and catered lunches.

GET CONNECTED

📷 [@gcucommuters](#)
✉ commuters@gcu.edu



Hello New Lopes!

My name is Darion Padilla and I am honored to serve as your ASGCU Student Body President for the 2021-22 academic year.



Welcome to Grand Canyon University! I hope and pray that these next three to four years are the best of your life! This is your new home and I am so excited to be one of the first people to welcome you! GCU is an incredible place, not only academically, but also relationally and spiritually. The people you meet here and the experiences you will have are unlike any other university in the world. As you begin your journey through college, it can be intimidating and oftentimes challenging. However, I encourage you to lean into those challenges because more often than not, they will provide an opportunity for growth.

You are one of the strongest freshman classes I have ever seen. Over the past year and a half, you have experienced something that most people never have and hopefully never will again. You may have missed out on in-person instruction, dances, sports games, choir concerts among other things that enhance high school experience. Yet through it all, you made it here! As we return to normal, I encourage you to take every opportunity presented to you. Getting connected is the best way to truly become a part of the GCU community. Whether your niche is in academics, athletics, spiritual life, student leadership or community, GCU has something for you. Take advantage of every open door placed in front of you and the surrounding community, **PLUG IN!**

I quickly want to highlight a few ways that you can get involved! The first and arguably the best is by applying for Freshman Class Council (FCC), the only Student Leadership position available to freshmen. This amazing program, through ASGCU, helps first-year students grow in leadership and prepares them for their futures at GCU. I would also highly recommend attending Chapel, the Gathering and joining a life group. Also, visit your college's Academic and Career Excellence (ACE) Centers, they are great to connect with people in your program as well as a way to get help with homework and even resumes and cover letters.

Thank you again for choosing GCU and I look forward to getting to meet you and serve you!

Darion Padilla

Associated Students of Grand Canyon University
602-639-6871 | asgcu@gcu.edu

We can't wait to walk alongside you during this monumental new year!

GETTING INVOLVED

Student Engagement

ASGCU

ASGCU strives to represent and serve the student body in pursuit of academic success, personal excellence and spirituality. ASGCU is a multi-faceted, but cohesive team that is built to reach every student in a meaningful way. Visit asgcu.gcu.edu to learn more!



CLUBS AND ORGANIZATIONS

GCU offers an array of clubs and organizations created and run by students. These clubs range from academic and professional organizations to ministry-motivated and leisure-enthused organizations with a great variety in-between. They can inspire you to find your passion, develop your skills and meet new friends! Find a roster of active clubs and organizations at gcuclubs.org

CANYON ACTIVITIES BOARD

The Canyon Activities Board (CAB) is a student leadership organization that provides quality social programming for our diverse student body. From lip sync battles to movies on the lawn, CAB plans, implements and runs events that build community, foster connection and create memories. Check out our upcoming events on the GCU Engage app and [@CABGCU](https://www.instagram.com/CABGCU) Instagram to experience the fun of GCU community!



CANYON COOL DOWN



LIP SYNC



Follow [@gcuclubs](https://www.instagram.com/gcuclubs) on Instagram!

Interested in starting a new club?
Visit the Department of Student Engagement in Student Life Building 26 or email clubs@gcu.edu to get started.



Diversity and Inclusion

The Diversity and Inclusion Department provides the university and our students with support, community and inclusion. As a Christian institution, we embrace a biblical worldview and uphold a responsibility to fulfill the Great Commandments which simply stated are "to love God and to love our neighbor." Our Christian perspective compels us to treat every individual equally with respect and compassion.

Want to get involved or have questions about diversity on campus? Visit us!

**Student Life Building 26, Room 110
Monday – Friday from 9 am – 5 pm**



The Diversity and Inclusion Department is led by GCU alum, Donald Glenn.
Glenn is a graduate of GCU's College of Theology where he earned a Master of Arts degree in concentrations of pastoral ministry and Christian leadership. He is a force for positive change and will be influential in teaching and mentoring the next generation of Lopes!



Spiritual Life

The Department of Spiritual Life exists to support students by providing spiritual formation opportunities throughout a student's college experience. We organize worship services, small groups and ongoing outreach ministries.

LIFE GROUPS

Wherever you are in your faith journey, we want to help you to grow in your relationship with Jesus and form Christian community here at GCU. One of the best ways to do this is by getting involved with a life group! There are life groups in every living area and there are several Life Groups for commuter students as well. With over 240 life groups across campus, there are plenty of opportunities for you to find a place to grow spiritually.*

LIFE LEADERS

- Teach and lead Life Groups on a weekly basis
- Are available for prayer, spiritual counsel and support

*As of August 2021

SpiritualLife@gcu.edu

Visit [gcu.edu/LifeGroups](https://www.gcu.edu/LifeGroups) at the beginning of each semester for an updated schedule!



Local Outreach, Global Outreach and Chapel Services

CHAPEL AND THE GATHERING

Spiritual Life hosts two weekly worship services where the GCU community gathers to hear teaching from the Bible and worship together. Worship is led by GCU students and speakers come from a variety of local churches as well as Christian organizations. At both Chapel and the Gathering, staff, faculty and students come together to worship, hear God's Word and connect with one another.

Chapel: Mondays at 11 am in GCU Arena

The Gathering: Tuesday nights at 7 pm in the Antelope Gym

Credit for Chapel: Interested in earning credit for building fellowship and hearing His Word? Just attend Chapel!

Here's how it works:

- Chapel attendance is worth 0.5 credit hours per semester/four credits MAX
- You may only miss three Chapel services per semester
- During the first three weeks of the semester after Chapel, you must post a discussion question (DQ) reply in the online classroom
- A 500-word reflection of your favorite Chapel service is required at the end of the semester
- Chapel credit is given a pass/fail grade

Questions about how to register for chapel? Follow these steps to reach out to your SSC!

1. **GO ONLINE** through your **Student Portal**
2. **LOG IN** to your **Student Portal** and click **"Course Registration"** under **Academics**
3. **CLICK THE LINK** to register, then the image **"Register For Chapel"** and your **SSC will receive notification to register you for Chapel**

LOCAL OUTREACH

Our local spiritual outreach offers a variety of opportunities for students to live out their faith by serving in the local community. Weekly ministries include outreach with children, inmates, foster families, the elderly, homeless and more.

GLOBAL OUTREACH

Our global spiritual outreach is focused on helping students experience God's heart for the nations. An annual missions fair held each fall provides students with the opportunity to sign up for a spring break or summer mission trip experience. We also facilitate weekly ministries with refugees.



Veterans Center

The Veterans Center is a hub for GCU veteran and military students! We provide peer and staff support, as well as assist in the unique challenges of navigating military education benefits and services. The center is staffed with a veteran resource manager whose focus is creating a strong support network for your success at GCU.

VeteranCenter@gcu.edu
602-639-6180



ROTC

The Reserve Officer Training Corp (ROTC) program offers students the tremendous opportunity to learn principles of leadership and serve in the U.S. Army. In GCU's ROTC programs, you will develop governance skills that prepare you for a post-military career and have the opportunity to receive an officer commission as a second lieutenant in the U.S. Army upon graduation.

The Army ROTC program offers traditional students an opportunity to compete for a merit-based scholarship. If you are interested, visit the GoArmy website to learn about requirements, your commitment and how to apply.

For more information about GCU's ROTC program, email ROTCOfficer@gcu.edu or call 602-639-6618.

Campus Recreation

The Department of Campus Recreation is here to provide students with the opportunity to get involved and build community on campus through the medium of intramural sports, outdoor recreation and physical fitness. If you enjoy playing recreational sports, hiking outdoors or just staying fit in one of the student fitness centers, Campus Recreation has an outlet for you! You can register for intramural sport activities and outdoor recreation trips at myrec.gcu.edu

GCU OUTDOOR RECREATION

GCU Outdoor Recreation serves students by providing outlets of outdoor recreation to engage both individuals and groups in adventure, fellowship, environmental stewardship, leadership development and outdoor education. We will fuel endless adventures that occur in God's creation to help challenge students physically, spiritually and mentally.

- Hiking Trips
- Grand Canyon Trips
- River Adventures
- Fishing Trips



CANYON ACTIVITY COMPLEX

Outdoor facilities are open daily, with lights on from dusk to midnight and include a skate park, roller hockey rink, basketball courts and more!

Canyon Activity Center Hours:
Monday – Friday 8 am – midnight
Saturday and Sunday 8 am – 10 pm

The facility includes a climbing wall with routes for all skill levels and can be accessed through daily passes or a semester membership. To learn more, visit myrec.gcu.edu or call 602-639-8569.



- Bowling
- Dodgeball
- Five-on-five Basketball
- Flag Football
- Golf
- Indoor Volleyball
- Kickball
- Pickleball
- Ping Pong
- Roundnet
- Sand Volleyball
- Soccer
- Softball
- Three-on-three Basketball
- Ultimate

GCU Club Sports

GCU's club sports program provides students with the opportunity to pursue their passion and gain learning experiences outside of the classroom. We offer a wide range of intercollegiate club sports, from nationally recognized and competitive sports like lacrosse, rugby and ice hockey to rapidly-growing teams like esports and powerlifting.

Club Sports Offered:

- A Capella
- Artistic Swimming
- Bowling
- Club Baseball
- Club Basketball
- Club Beach Volleyball
- Club Golf
- Club Soccer
- Club Softball
- Club Spirit
- Club Swimming
- Club Tennis
- Club Volleyball
- CrossFit
- Esports
- Flag Football
- Ice Hockey
- Lacrosse
- Mixed Martial Arts
- Powerlifting
- Rugby
- Running Club
- Roundnet
- Triathlon
- Ultimate
- Water Polo
- Wrestling



Want to join a club sport?

1. Review the list of current teams
2. Contact the coach or student leader of the team you want to join so you can visit practice or a team meeting
3. Obtain a general sports physical (you can get one at the Canyon Health and Wellness Clinic)
4. Pay your dues and upload supplemental documents online
5. Start playing



Visit [ClubSports.gcu.edu/about](https://clubsports.gcu.edu/about) for more information.



Scan here to register!

Club sports are not regulated by the National Collegiate Athletic Association (NCAA), and do not have varsity status at the intercollegiate athletic level. However, club sports are organized and administered by their respective national sport governing body.

HAVOCS

GCU students are known for their constant energy, support and pride for GCU athletics. Havocs strive to create the most unique game day experience in college basketball and a sense of camaraderie for all students.



GCU HAVOCS

The GCU HAVOCS are the rowdiest student section in the nation. They support all GCU athletic teams while promoting school spirit and Lope pride. Known for storming into the Arena during

basketball games, the HAVOCS make opposing teams wish they had stayed home! Their intense energy creates the craziest and most hyped atmosphere in college basketball.

Stay up-to-date on all Havocs events, contests, registration and news by following

@GCUHavocs



**The BIGGEST PARTY
in college basketball!**

- SBNATION 2016



GCU Apps!

GCU uses a few mobile apps to keep students connected to campus life and informed of the resources available to them! Download the apps on your mobile device and log in using your GCU email address (@my.gcu.edu) and your portal password.

GCU Student App:

- Course schedule and details for all terms
- Posted grades and GPA for all terms
- Class changes, cancellations and delays
- Chapel check in and schedule
- Student ID access to Dining Dollars, Lopes Cash and student discounts
- Current account balance, budgeting and transaction information
- Food venues, hours and restaurant line cameras
- Map and search for locations, campus navigation
- Location tracking
- Charges and payment statements
- Student information, profile and counselor information
- Convenient contact with your counselor



GCU STUDENT APP

How to find your way around campus:

STEP ONE:

Select 'Map' from the sidebar.

STEP TWO:

Select which building or location you are heading to.

STEP THREE:

Use the blue dot to locate your current location and the red location pin to locate where you are heading. Use the map for a location tracking tool and navigate your way around.



Tips for navigating campus:



- Wheels are not allowed indoors. Make sure you utilize the racks around campus to store your scooters, skateboards and bikes while you are in class or grabbing food!



- Be sure to always lock your personal property (skateboards, bikes, etc.) when left unattended.



- Golf cart shuttles are available for rides around campus! To access the shuttle stop route, visit gcu.edu/visit



TRANSACTION MOBILE ORDERING APP

Transact Mobile Ordering App:

Skip the line and order ahead with the new mobile ordering app for dining on campus!

GCU Engage App:



GCU ENGAGE APP

- Check-in to campus events and mandatory meetings
- Connect with other students
- Stay up to date on all upcoming campus events
- Keep up on career and professional development workshops through the ACE Center
- Join Clubs and other organizations on campus
- Vote for ASGCU Student Body President and Vice President
- Access resources such as campus maps, department contact information, New Student Connection form and more
- Receive announcements, reminders and notifications about groups, events and other social discussions



Student Employment *Find Your Purpose. Find a Job.*

GCU and Grand Canyon Education (GCE) offer part-time student worker positions in a wide variety of on-campus departments each year. Student worker jobs allow you to gain valuable work experience!

FAQs:

Q: How do I apply for a student worker job?

A: All student worker applications are completed online. To view a list of all current openings on campus, please visit jobs.gcu.edu and jobs.gce.com

Q: What is the difference between GCU and GCE?

A: Grand Canyon University (GCU) has selected Grand Canyon Education, Inc. (GCE) as a partner to support the university's faculty, staff and community. Both GCU and GCE have the same policies and requirements for student worker positions.

Q: Can I work for GCU and GCE at the same time?

A: Yes! However, you may not work during any scheduled class times with either company and must maintain the minimum requirements to hold a student worker position.

Q: How much do the student worker jobs pay?

A: The compensation offered for each position can be found at the bottom of the job posting in Workday.

Q: What do FWS and NFWS mean?

A: FWS = Federal Work Study; NFWS = Non-Federal Work Study. Certain positions may require you to be eligible for FWS to be considered for employment, while other positions may be open to FWS and NFWS. For questions regarding your work study eligibility status, please contact your SSC.

Q: What do I need to bring with me if I have an interview?

A: Make sure you come prepared with multiple printed copies of your current resume and class schedule.

Q: Who can I contact if I have more questions about student worker jobs?

A: Email the Student Employment Team at StudentEmploymentTeam@gu.edu and follow us on Instagram for tips, events info and more! [@gcustudentjobs](https://www.instagram.com/gcustudentjobs)

Eligibility requirements:

- Both GCU and GCE are committed to a student first policy. Therefore, all applicants must meet the following eligibility requirements to be considered for student employment:
 - Enrolled at GCU as a full-time student in a bachelor's or master's level program.
 - Retain a 2.0 GPA as a bachelor's level student or a 3.0 GPA as a master's level student.
 - Maintain good financial and academic (SAP) standing with the university.

I-9 IDENTIFICATION DOCUMENTS:

If you're planning on getting a job on campus, make sure you come to campus prepared with your proper I-9 identification documents! You'll need to make sure to have these with you to bring into HR if you accept a job. Questions about I-9 docs? Email us at StudentEmploymentTeam@gu.edu.



Canyon Ventures

Canyon Venture is GCU's student-centric innovation and business acceleration center. The center already has over 30 start-ups working in it, seven of which are run by GCU students. If you are interested in learning how to transform an idea into a business or professional employment opportunities with Canyon Venture startups, you can access more information online through Career Connections, located in your student portal or contact Robert Vera at robert.vera@gu.edu.



Mail Services

Campus Residents: Students that live on campus may receive packages at the Mail Center. All residents on campus will receive a mailbox key upon move-in. You will receive an email or text message from the Mail Center once your package is processed and ready to be picked up.

Non-Residents: If you do not live on campus you are not able to receive packages. However, you can send out packages at the Mail Center.

WE HIGHLY RECOMMEND THE USE OF TRACKING ON ALL IMPORTANT PACKAGES SUCH AS PASSPORTS OR DOCUMENTS. IF THE PACKAGE DOESN'T HAVE TRACKING, THERE IS NO WAY FOR US TO LOCATE IT.

Example of correct mailing address:



Mail and Copy Center Hours:

Monday - Saturday
8 am - 5 pm
Closed Sunday

For updated hours and operations please refer to our Twitter [@GCU MailCenter](#)



RECEIVING CARE PACKAGES, BIRTHDAY CARDS AND OTHER SURPRISES IN THE MAIL AT GCU IS EASY!

Activate AmazonSmile to support the Students Inspiring Students (SIS) scholarship program.

1. Open the Amazon app on your phone.
2. Find "Settings" in the main menu and tap on "AmazonSmile"
3. Select "Grand Canyon University" as your charity
4. Follow the on-screen instructions to activate AmazonSmile in the mobile app
5. Amazon donates a portion of your eligible purchases at no extra cost to you

To learn more about SIS, visit gcu.edu/SIS



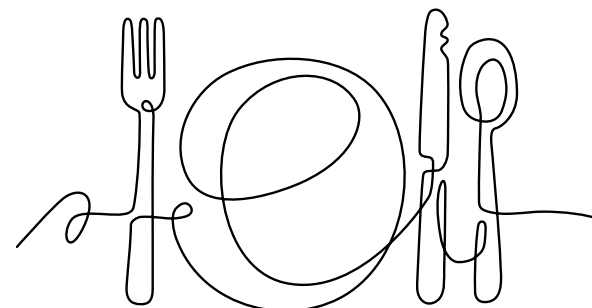
ALL STUDENTS CAN UTILIZE THE AMAZON LOCKERS LOCATE AROUND CAMPUS.

AMAZON LOCKER LOCATIONS:

- Nicole at Papago Apartments Building 48
- Galactic at Juniper Hall Building 84
- Cassowary at Diamondback Apartments Building 50
- Advance at Chaparral Hall Building 45

GCU Dining

GCU offers a wide variety of on-campus dining and convenience store options. All locations accept Dining Dollars, Lopes Cash, cash and credit cards. We cannot accept brand-name coupons or gift cards at our on-campus locations. However, we do occasionally feature GCU-specific specials for events and holidays.



STAY IN THE KNOW

Follow us at [@GCU Dining](#) on Twitter and Instagram to stay up to date on dining events, hours of operation and more. All of our location hours are kept up-to-date on the GCU Student App. Check out GCU Today Digest for dining events. Grab a Dining Guide at the Student Union or download it from our dining website for more information on job opportunities, healthy meals and much more.

Eatery descriptions, hours, food line cameras, dining guide and more are located at gcu.edu/dining

HEALTHY PICKS

Our Healthy Picks program outlines food options that meet criteria for healthier, gluten-friendly, vegan and vegetarian diets. These options are highlighted at each dining location. Read more about this program by visiting our website or checking out the Healthy Picks Guide, located in the Student Union!

CAMPUS DINING LOCATIONS

AGAVE HALL Building 41
Lopes Mart Convenience Store

ANTELOPE APARTMENTS Building 52
Herd Stop and Community Market

ANTELOPE GYM Building 22
Antelope Gym Snack Shack

CANYON ACTIVITY CENTER Building 58
Lopes Mart Convenience Store

CHAPARRAL HALL Building 45
Lopes Mart Convenience Store

DIAMONDBACK APARTMENTS Building 50
Chick-fil-A and GCBC

GCU ARENA Building 38
Arena Café and Purple Greens

JUNIPER HALL Building 84
Lopes Mart Convenience Store

LOPES WAY Buildings 36 And 37
Taco Thunder, Pita Jungle, Subway, Chick-fil-A, The Grid Convenience Store, Auntie Anne's and Panda Express

ROADRUNNER APARTMENTS Building 28
GCBC

STUDENT UNION Building 29
Einstein Bros. Bagels, Canyon Pizza Co., Habit Burger Grill, Jamba Juice, GCBC, Qdoba Mexican Grill, Lopes Training Table, Lopacellis Pasta and Fresh Fusion

THE RIVERS (Building 76-78)
Panera Bread, Nekter Juice Bar and GCBC

THUNDER ALLEY Building 11
Taco Bell, Farmer's Market and Sweet Disciple

GCU HOTEL Building 68:
Canyon 49 Grill and GCBC

GRAND CANYON EDUCATION Building 71:
Canyon Corner Store

GCU GOLF COURSE:
The Lope House Restaurant and Clubhouse

MEAL PLANS

CAMPUS RESIDENTS: Students living on campus are required to purchase a meal plan.

COMMUTERS: Meal plans are not required but many students find them convenient. Did you know you can even purchase meal plans with financial aid? For more information, contact your SSC. *Most places also accept cash, credit and debit along with meal plans.*

ACCESSING YOUR PLAN

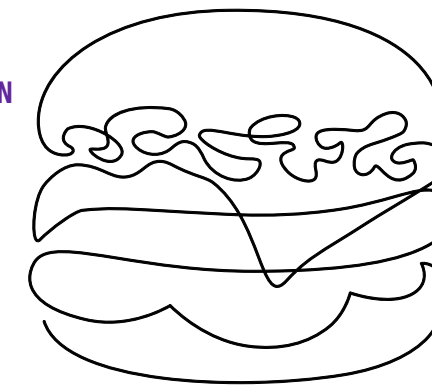
Use the GCU app on your phone to conveniently access your meal plan and Lopes cash information.

DINING DOLLAR SCHEDULE

Unused fall dining dollar amounts roll over to the spring, but unused spring amounts do not roll over to the next year.



PLEASE KEEP YOUR PHYSICAL STUDENT ID SECURE BECAUSE YOU CAN ONLY ACCESS YOUR DINING PLAN USING YOUR ID.





GRAND CANYON BEVERAGE CO.

Grand Canyon Beverage Company was made by students for students!

With each sip, you support our mission to provide drinks and food that invigorate students to grow GCU's culture through fellowship, community and service! GCBC is your one-stop-shop for GCBC's own Stampede energy drinks and infusions, coffee, espresso beverages, teas and lemonades. Our new all-day breakfast menu, Nourish, includes breakfast sandwiches, avocado toast, bagels and more. It's the best place to grab a drink on your way to class, hang out with friends or do homework!

Locations:

- Student Union, 2nd Floor
- Roadrunner Apartments
- Diamondback Apartments
- The Rivers Apartments

KEEP UP WITH THE HERD

@gcbc49

@canyon49grill

Canyon 49

CANYON 49 GRILL

A University Eatery in the Heart of Phoenix

Hop aboard the GCU shuttle that conveniently runs between main campus and Canyon 49. Enjoy a 10% student discount and use your dining dollars!

Grab your herd and dig in!

Fresh salads, pizzas, burgers and wings are only the beginning. Canyon 49 is your new neighborhood hangout for breakfast, lunch, dinner and fun on the game deck. It features:

A deluxe coffee bar: Supercharge your day with GCBC draft cold brew coffee, tea and specialty drinks.

Patio and lawn space: Relax by the fire or step over to the gaming lawn for cornhole! Enjoy our six outdoor TVs—ideal for watching sports.

Private dining: Book our private dining room for your next special event or meeting.

Open Daily 8 am - 9 pm
Reserve your table today!
602-639-8502 | canyon49.com



Local Attractions

Located in the heart of Phoenix, GCU neighbors a variety of urban attractions including museums, popular concert venues, five major professional sports teams and world-class shopping. Plus, we have all the outdoor attractions you'd expect from a city known for year-round sunshine. Go golfing, hiking, horseback riding and more!

Arizona Science Center

600 E. Washington St., Phoenix, AZ 85004

602-716-2000 | azscience.org

Named one of the premier science centers in the nation, the center houses four levels of exciting hands-on exhibits, a state-of-the-art planetarium and a five-story-high giant screen theater.*

Phoenix Zoo

455 N. Galvin Pkwy., Phoenix, AZ 85008

602-273-1341 | phoenixzoo.org

This is one of the largest non-profit zoos in the U.S., caring for over 3,000 animals, with nearly 400 species represented, including many threatened and endangered species.**

Desert Botanical Garden

1201 N. Galvin Pkwy., Phoenix, AZ 85008

480-941-1225 | dbg.org

Hike the trails amid flora and fauna only found in the Sonoran Desert—you might even spot snakes, roadrunners and a family of quail.

OdySea Aquarium

9500 E. Via de Ventura-A-100, Scottsdale, AZ 85256

480-291-8000 | OdySeaAquarium.com

This multi-level facility holds more than 2 million gallons of water, features more than 65 exhibits, with 370 species and a theatre with the world's only revolving aquarium experience.*

Top Golf

9500 Talking Stick Way, Scottsdale, AZ 85256

480-240-2402 | topgolf.com

This is the premier entertainment and event venue in Scottsdale, with fun point-scoring golf games for all skill levels, upscale bar food and drinks, music and more!

* Retrieved from Arizona Science Center in August 2021.

** Retrieved from Phoenix Zoo in August 2021.

† Retrieved from OdySea Aquarium in August 2021.

A University Championship Golf Course

5902 W. Indian School Road, Phoenix, AZ 85033

623-846-4022 | GolfCourse@gcu.edu | gcugolf.com

The course features include new tee boxes, challenging greens, extended fairways, enhanced bunkers and updated practice facilities. The 10,000-square-foot clubhouse includes a restaurant and bar, second-story practice facility and fully equipped pro shop.*

The Lope House

Enjoy Welcome Week with your family and relax on our scenic outdoor patio at The Lope House Restaurant, located inside the GCU Golf Course Clubhouse.

Call 623-846-4022 and ask for our special student rate while booking!

GCU Golf Course Experience:

- Clubhouse
- Redesigned links
- Lope House Restaurant
- Stunning course features
- Fully equipped GCU pro shop

Student Specials: 10% discount at restaurant
Accepts GCU student dining dollars for breakfast and lunch§

Choose from a menu of modern American cuisine:

Soup and salads • Shared bites • Burgers, hot dogs, sandwiches and wraps

* As of August 2021.
§ Excluding alcoholic beverages.

Local Lodging

Do you have family visiting from out of town?

We have several great options for accommodations, including the GCU Hotel and other local hotels with special rates for GCU families.



GCU HOTEL

GCUHotel.com

CALL TO BOOK: 1-84-HOTELGCU (1-844-683-5428)

Our hotel is conveniently located on campus property, with a short shuttle service available to and from main campus. Enjoy your stay by dining at our on-site restaurant Canyon 49 Grill or relax at the resort-style pool.

Other lodging options around campus:

HYATT PLACE PHOENIX-NORTH

10838 N. 25th Ave., Phoenix, AZ 85029
602-997-8800

WYNDHAM GARDEN PHOENIX MIDTOWN

3600 N. 2nd Ave., Phoenix, AZ 85013
602-604-4906

HILTON GARDEN-INN – PHOENIX MIDTOWN

4000 N. Central Ave., Phoenix, AZ 85012
602-279-9811

THE CLARENDON HOTEL AND SPA

401 W. Clarendon Ave., Phoenix, AZ 85013
602-252-7363

THE WESTIN PHOENIX DOWNTOWN

333 N. Central Ave., Phoenix, AZ 85004
602-429-3500

ARIZONA BILTMORE – A WALDORF ASTORIA RESORT

2400 E. Missouri Ave., Phoenix, AZ 85016
602-955-6600



For a complete list of where to stay or what to do in Phoenix, visit gcu.edu/visit

Local Eateries

Let's taco bout it!



CANYON 49 GRILL

5115 N. 27th Ave., Phoenix, AZ 85017
602-639-8502 | canyon49.com

CHURN

5233 N. Central Ave., Phoenix, AZ 85012
602-279-8024 | churnaz.com

FEDERAL PIZZA

5210 N. Central Ave., Phoenix, AZ 85012
602-795-2520 | federalpizza.com

FLOWER CHILD

100 E. Camelback Road, Phoenix, AZ 85012
480-212-0180 | iamflowerchild.com

JOYRIDE TACO HOUSE

5202 N. Central Ave., Phoenix, AZ 85012
602-274-8226 | joyridetacohouse.com

LOU MALNATT'S PIZZERIA

100 E. Camelback Road, Phoenix, AZ 85012
602-892-9998 | loumalnatis.com

POSTINO

5144 N. Central Ave., Phoenix, AZ 85012
602-274-5144 | postinowinecafe.com

SAUCE

25 E. Camelback Road, Phoenix, AZ 85012
602-845-7007 | saucepizzaandwine.com

SHAKE SHACK

100 E. Camelback Road, Phoenix, AZ 85012
602-903-3240 | shakeshack.com

WINDSOR

5223 N. Central Ave., Phoenix, AZ 85012
602-279-1111 | windsoraz.com

Campus Map

3300 W. Camelback Road, Phoenix, AZ 85017
gcu.edu | 800-800-9776 | gcu.edu/CampusMap



Enjoy the GCU Golf Course during your stay! 5902 W. Indian School Road, Phoenix, AZ 85033



Canyon 49 is open for dine-in or takeout! 5115 N. 27th Ave., Phoenix, AZ 85017

ACADEMIC BUILDINGS

Colangelo College of Business
 Education
 Engineering
 Fine Arts and Production
 Honors College - Technology
 Humanities and Social Sciences
 Natural Sciences
 Theology
 Technology
 West Lecture Halls

ATHLETIC FACILITIES

Antelope Gymnasium
 Arena
 Baseball Stadium
 Chaparral Hall - Gym
 Canyon Activity Center
 Juniper Hall - Gym
 Lopes Performance Center
 Papago Apartments - Gym
 Soccer Stadium
 Softball Stadium

ADMINISTRATION

Facilities Management
 Grove Parking Garage - Public Safety Offices
 Student Life - Athletic/Executive/Student Affairs Offices
 Student Union - Sodexo

COVERED PARKING

29th Avenue Parking Garage
 Grove Parking Garage
 29th Avenue and Missouri Parking Garage
 33rd Avenue Parking Garage
 Halo Parking Garage

RESIDENCE HALLS

Acacia Hall
 Agave Apartments
 Agua Fria Apartments
 Antelope Apartments
 Cactus Apartments
 Canyon Hall
 Camelback Hall
 Chaparral Hall
 Cypress Hall
 Diamondback Apartments
 Encanto Apartments
 Jerome Apartments
 Juniper Hall
 North Rim Apartments
 Ocotillo Hall
 Palo Verde Apartments
 Papago Apartments North
 Papago Apartments South
 Ponderosa Apartments
 Prescott Hall
 Roadrunner Apartments
 Saguaro Hall
 Salt River Apartments
 Sedona Hall
 Sonora Apartments
 Verde River Apartments
 Willow Hall

RETAIL/ENTERTAINMENT

Arena
 Club Sports - Canyon Activities Center
 Commuter Lounge - Kaibab
 Esports Arena - Technology
 Ethington Memorial Theatre
 Jerry Colangelo Museum
 Lope Shop
 Thunder Alley and Thunderground

FOOD SERVICES

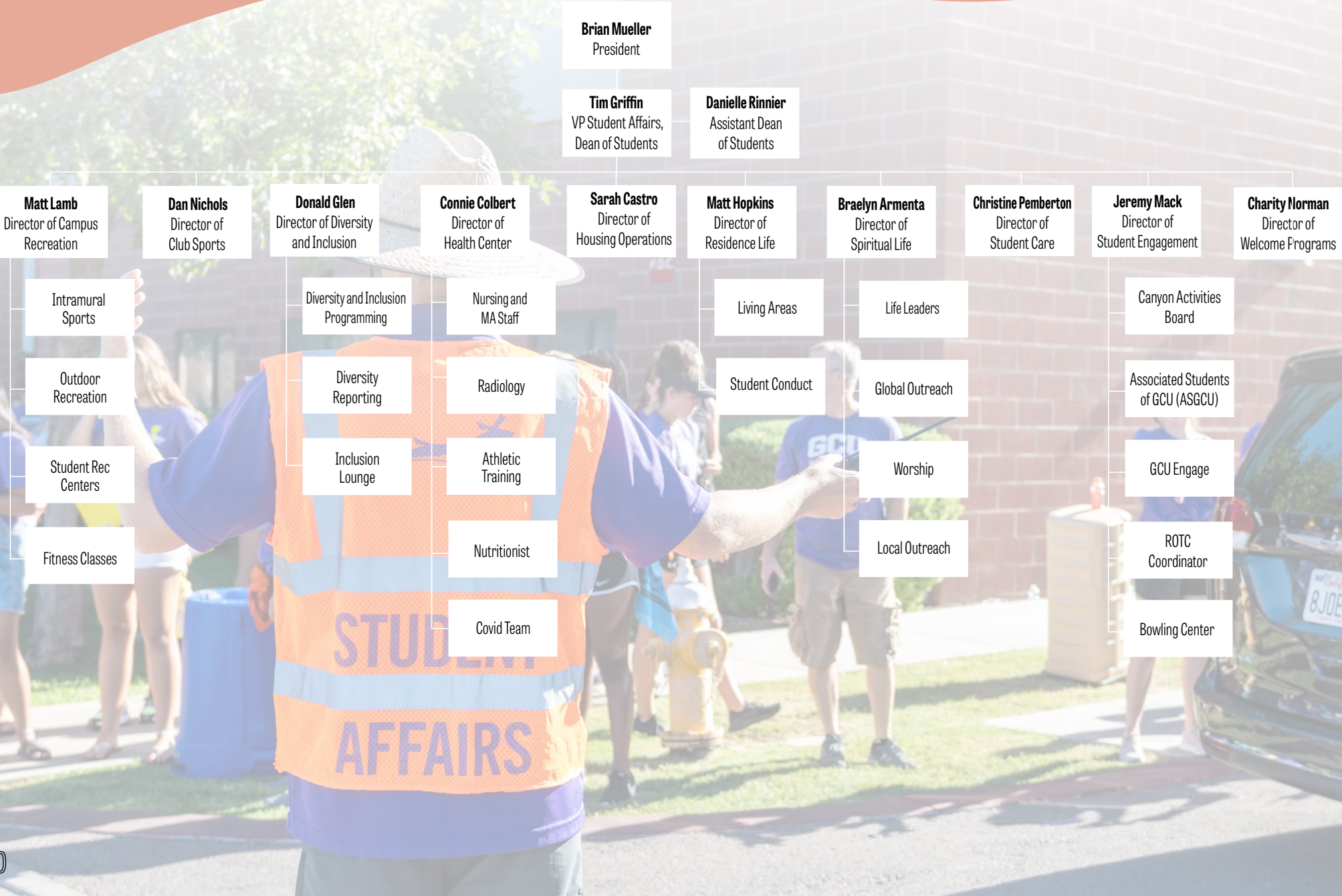
(DESIGNATED BY A **BLACK STAR** ON THE MAP)
 Arena Café - Arena
 Auntie Anne's Pretzels - Camelback Hall
 Canyon Pizza Co. - Student Union
 Chick-Fil-A - Prescott Hall and Diamondback Apartments
 Einstein's Bros. Bagels - Student Union
 Farmer's Market - Thunder Alley
 Fresh Fusion - Student Union and Diamondback Apartments
 GCBC - Student Union, Diamondback Apartments and Roadrunner Apartments
 Harvest Kitchen - Student Union
 The Herd Stop - Antelope Apartments
 Jamba Juice - Student Union
 Lopacellis Pasta - Student Union
 Lopes Mart - Canyon Activities Center, Agave Apartments, Chaparral Hall and Juniper Hall
 Panda Express - Camelback Hall
 Pita Jungle - Prescott Hall
 Purple Greens - Arena
 Qdoba - Student Union
 Subway - Prescott Hall
 Sweet Disciple - Thunder Alley and Thunderground
 Taco Bell - Thunder Alley
 Taco Thunder - Lopes Way
 The Grid - Camelback Hall

STUDENT SUPPORT SERVICES

(DESIGNATED BY A **YELLOW STAR** ON THE MAP)
 ACE Center - Humanities and Social Sciences
 Academic Records/Transcripts - Cypress Hall
 Alumni Office - Student Advising Center
 Antelope Reception Center - Student Advising Center
 Discover GCU - Cypress Hall
 Financial Aid - Cypress Hall
 Health and Wellness Center - Papago Apartments
 Housing Operations - Student Life
 International Student Office - Kaibab
 Library - Student Union
 Mail Center - 31st Avenue Parking Garage
 Nerd Herd - GCBC Student Union
 Parking Passes/Public Safety - Grove Parking Garage
 ROTC - Kaibab
 Student Disability Services - Papago Apartments
 Student Leadership - Student Life
 Student ID's - Student Advising Center
 Veteran Services - Kaibab



Student Affairs



Connect with us!

| | Department Name | Instagram |
|--|--------------------------------|--|
| | Grand Canyon University | @GCU |
| | Welcome Programs | @GCUWelcome |
| | Academic and Career Excellence | @GCUAce |
| | First Year Experience | @FYE_ACE |
| | Commuter Life | @GCUCommuters |
| | ASGCU | @ASGCU |
| | Canyon Activities Board | @CABGCU |
| | GCU Engage | @GCUEngage |
| | Global Outreach | @GCU.GlobalOutreach |
| | Local Outreach | @ThePlugGCULocalOutreach |
| | Prayer Team | @GCU.Prayer |
| | Diversity and Inclusion | @GCU_Multicultural |
| | Campus Recreation | @GCUCampusRec |
| | Outdoor Recreation | @GCUOutdoorRec |
| | Intramurals | @GCUIntramurals |
| | Club Sports | @GCUClubSports |
| | GCBC | @GCBC49 |
| | ROTC | @GCU.ArmyROTC |
| | Havocs | @GCUHavocs |
| | Athletics | @GCU_Lopes |
| | GCU Dining | @GCU Dining |
| | Canyon 49 Grill | @canyon49grill |



CHECK OFF ALL THE ACCOUNTS YOU FOLLOW!



This image shows a double-page spread of a notebook. The left page, numbered 42, has a teal background with a white dotted pattern in the top-left corner. The word "Notes" is written in a purple font at the top-left. The rest of the page is a white area with horizontal grey lines. The right page, numbered 43, has a purple background with a white dotted pattern in the bottom-right corner. It also features a white area with horizontal grey lines. The two pages are separated by a central teal shape that resembles a stylized spine or a decorative element. The overall design is modern and artistic.

GCU DIRECTORY

Now that you're officially a student here at GCU, you have access to a whole campus full of resources and people who are here to help you! Feel free to reach out to the departments below as needed to help you make the most out of Lope life.

ACADEMIC SERVICES

STUDENT SERVICES COUNSELORS

- Assists students with planning and maintaining their program of study once enrolled
- **800-800-9776**

ACADEMIC CAREER AND EXCELLENCE CENTERS

- Helps with everything from academic support and coursework assistance to finding a job on campus and scheduling campus/scholarship service hours
- **602-639-8901**

ADMISSIONS COUNSELOR

- Assists students with their initial enrollment into a program of study and transition to campus
- **800-800-9776**

CENTER FOR INTERNATIONAL EDUCATION

- Assists international students with admissions and program completion
- **602-639-9761**

INTERNATIONAL STUDENT RESOURCES

- International students must check in with the International Students Office upon arrival on campus
- **602-639-7382**

LIBRARY

- Provides learning resources through physical and online libraries
- **602-639-6641**
- library@gcu.edu
- library.gcu.edu

OFFICE OF ACADEMIC RECORDS

- Tracks student progress to degree completion, evaluates transcripts and admits students to the university
- **800-800-9776**
- AcademicRecords@gcu.edu

CAMPUS RESOURCES

CAMPUS OPERATIONS AND PARKING

- Assists students with parking permits and student ID cards
- **602-639-6527**

LAUNDRY

- Washers and dryers are available for \$1.25 per load
- Cash and credit cards accepted

MAIL AND COPY CENTER

- Assists students with personal mailboxes, mailing letters and packages, as well as photocopying services
- **602-639-7905**

PUBLIC SAFETY

- Assists students, faculty and staff with issues regarding campus safety
- Officers are on-call 24 hours a day
- **602-639-8100**

STUDENT DISABILITY SERVICES

- Assists students with disabilities to obtain reasonable accommodations based on student self-disclosure
- **602-639-6342**
- DisabilityOffice@gcu.edu
- gcu.edu/DisabilityOffice

TECHNICAL SUPPORT

- Assists students with technical issues regarding the university systems
- **877-428-8447**
- TechSupport@gcu.edu
- support.gcu.edu

COPPER STATE CREDIT UNION

- Assists students with banking at their location inside the Lope Shop and is proud to offer the Copper State FREE Lopes Checking
- **623-580-6080**

COLLEGES

COLANGELO COLLEGE OF BUSINESS

- **602-639-7205**
- ccob@gcu.edu

COLLEGE OF EDUCATION

- **602-639-6205**
- coe@gcu.edu

COLLEGE OF DOCTORAL STUDIES

- **602-639-6202**
- doctoral@gcu.edu

COLLEGE OF FINE ARTS AND PRODUCTION

- **602-639-7500**
- cofap@gcu.edu

COLLEGE OF HUMANITIES AND SOCIAL SCIENCES

- **602-639-8301**
- chss@gcu.edu

COLLEGE OF NURSING AND HEALTHCARE PROFESSIONS

- **602-639-6405**
- conhcp@gcu.edu

COLLEGE OF SCIENCE, ENGINEERING AND TECHNOLOGY

- **602-639-8302**
- cset@gcu.edu

COLLEGE OF THEOLOGY

- **602-639-7729**
- cot@gcu.edu

HONORS COLLEGE

- **602-639-8228**
- GCUHonors@gcu.edu

STUDENT AFFAIRS

CANYON HEALTH AND WELLNESS CENTER

- **602-639-6215**
- GCUHealth@gcu.edu

CAMPUS RECREATION

- **602-639-8241**
- intramurals@gcu.edu
- **602-639-7724**
- OutdoorRecreation@gcu.edu

CLUB SPORTS

- Teams play at a highly competitive level that demands excellence and creates unforgettable experiences
- ClubSports@gcu.edu

HOUSING OPERATIONS

- Assists students with housing reservations
- **602-639-6240**
- housing@gcu.edu

RESIDENCE LIFE

- Provides support to students in campus housing
- **602-639-6244**
- ResidenceLife@gcu.edu

SPIRITUAL LIFE

- Assists students with spiritual growth and development
- **602-639-6750**
- SpiritualLife@gcu.edu

STUDENT CARE

- Serves students by providing brief, solution-focused therapeutic services for a wide variety of psychological issues
- Monday – Friday: 8 am – 5 pm
- Student Life Building 26, 2nd Floor
- **602-639-7007**

STUDENT ENGAGEMENT

- Assists students in getting involved in campus activities, intramurals, clubs and organizations
- **602-639-7250**
- student.engagement@gcu.edu

WELCOME PROGRAMS

- Connects new students, parents and families to the GCU community
- **602-639-6002** (call or text)
- WelcomePrograms@gcu.edu

GRAND CANYON
UNIVERSITY®

#LopeCountry