

gcu.edu/ABSN



Welcome to Phoenix, Arizona

Your path to nursing begins here



Find Your Purpose

You no longer have to wait to start nursing school. Our ABSN program can put you on an accelerated path to this profession with three start dates a year. As you consider relocating to Phoenix to begin your education, we thought it would be helpful to provide a snapshot of what life in Arizona is like.

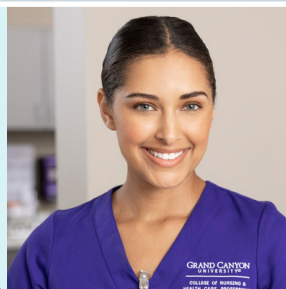
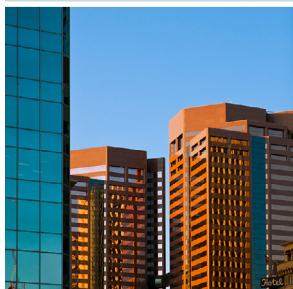
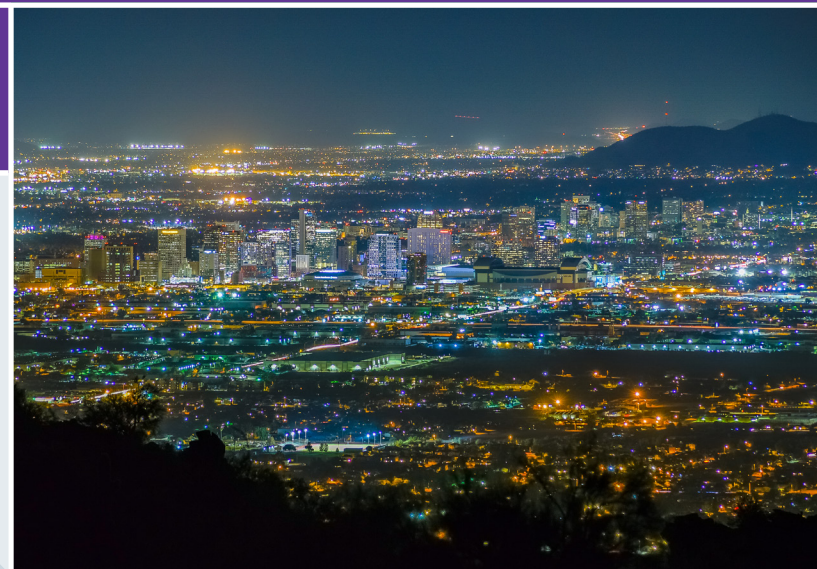
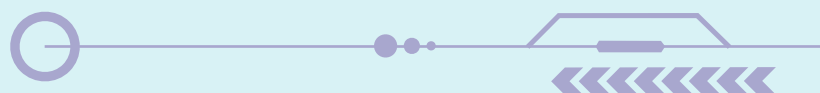


Table of Contents

Neighborhoods.....	3
Things To Do	4
Local Directory.....	5



Neighborhoods

Greater Phoenix comprises several cities and suburbs. These cities are less than 30 miles from Phoenix and are in close proximity to our Sun City, West Valley, and East Valley learning site locations.



Peoria



Surprise



Avondale



Glendale



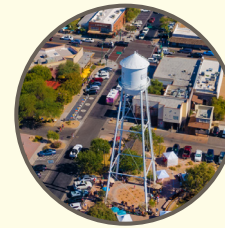
Tempe



Ahwatukee



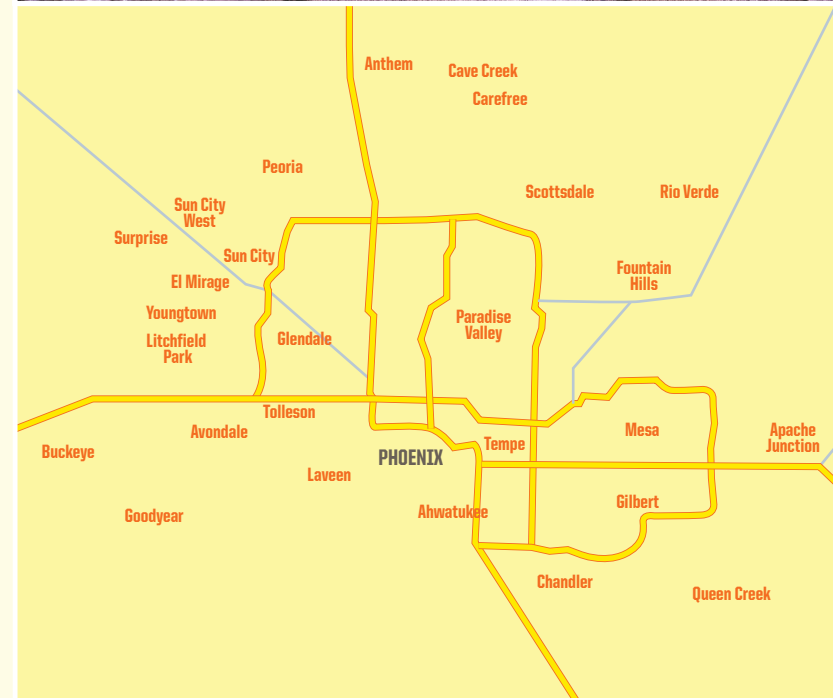
Chandler



Gilbert



Mesa



Need assistance securing housing near our satellite campus?

Our proud partner, Openshaw Real Estate Group, can help! Reach out today to take advantage of their complimentary resources.

ABSNHousing.com | 480-613-8061 | info@OpenshawRealEstateGroup.com



Things To Do

With one of the largest regional parks systems in the nation, day trip opportunities and an abundance of concert halls, museums and sporting events, Phoenix residents can spend their days doing everything under the sun (about 300 sunny days per year)!¹ According to locals, here are the top things to do when you move to Phoenix.



TAKE A DAY TRIP

Grand Canyon National Park (Approx. 3.5 hour drive north of Phoenix) In just a day, you can visit one of the Seven Natural Wonders of the World. Walk along the Rim Trail, snap photos at Yavapai Point and more!

Flagstaff, AZ (Approx. 2.5 hour drive from Phoenix) Enjoy cooler temperatures, laid-back outdoorsy charm and a craft beer or two in Flagstaff. Whether you like to hike, bike or ski, this is the perfect town for big adventure.

Sedona, AZ (Approx. 2 hour drive from Phoenix) Spa lovers and nature enthusiasts are both sure to fall in love with this small Arizona town. Start with hiking the famous red rocks and end the day with a relaxing massage.

¹Norman, R. (2024, May, 6). *Everything you need to know about Arizona's weather*. Arizona's Family. Retrieved on July 10, 2024.

ENJOY THE LOCAL CULTURE

Desert Botanical Garden | dbg.org Arizona's gorgeous 140-acre botanical garden in Papago Park.

Japanese Friendship Garden | JapaneseFriendshipGarden.org
An authentic and lush 3.5-acre stroll garden.

Arizona Opera | AZOpera.org Opera house producing fully staged operas and concerts throughout the state.

Arizona Science Center | AZScience.org Museum providing exploration, education and entertainment for all ages.

Phoenix Art Museum | PHXArt.org An expansive collection of acclaimed international art from the past to the present.

The Phoenix Symphony | PhoenixSymphony.org Arizona's only full-time, professional orchestra.

CATCH A GAME

Phoenix is a city that's got game, fielding teams in three major professional sports leagues. It also hosts several signature sporting events throughout the year, including the PGA Tour Phoenix Open and College Football's Fiesta Bowl.

Arizona Cardinals | AZCardinals.com

Phoenix Suns | nba.com/suns

Arizona Diamondbacks | mlb.com/dbacks

EXPLORE NEARBY NATURE

Estrella Mountain Regional Park Explore this big, mountainous park featuring wetlands and undisturbed desert areas.

Lake Pleasant Regional Park Enjoy over 23,000 acres of water and beautiful, unblemished desert landscape.

McDowell Mountain Regional Park Visit this sprawling getaway providing hiking and horseback riding trails, campsites and more.

White Tank Mountain Regional Park Check out the largest regional park in the country featuring nearly 30,000 acres of desert and mountain landscape.



Local Directory



GOVERNANCE

City of Phoenix
phoenix.gov

Maricopa County
maricopa.gov

Arizona Department of Transportation
azdot.gov/business/district-contacts/contacts-central-district

Arizona Office of Economic Opportunity
oeo.az.gov

ANNUAL EVENTS

visitphoenix.com/events/annual-events/

ADDITIONAL RELOCATION INFORMATION

phoenixrelocationguide.com/ebook



UTILITIES

Arizona Public Service
aps.com

Arizona Water Company
AZWater.com

Southwest Gas Corporation
SWGAS.com

Salt River Project
SRPNet.com

NEWS OUTLETS

Arizona Republic
AZCentral.com

East Valley Tribune
EastValleyTribune.com

Phoenix Business Journal
BIZJournals.com/phoenix

Phoenix New Times
PhoenixNewTimes.com

TV STATIONS

ABC 15
abc15.com

CBS 5
AZFamily.com

Fox 10
fox10phoenix.com

NBC 12
12news.com

RADIO STATIONS

90.3 – Christian Contemporary
myflr.org

92.7 – Oldies
oldies927az.com

94.5 – Classic Hits
kool.radio.com

95.5 – Adult Hits
955TheMountain.iheart.com

96.9 – 90s to Today
mix969.iheart.com

99.9 – Adult Contemporary
kez999.iheart.com

101.5 – Top-40
live1015phoenix.radio.com

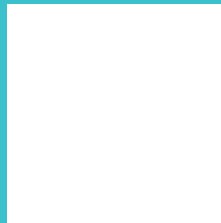
102.5 – Country
KnixCountry.iheart.com

gcu.edu/ABSN



East Valley (Chandler, AZ) Learning Site | 866-483-6578 | 4100 W. Chandler Blvd., Suite 100 | Chandler, AZ 85226
West Valley (Phoenix, AZ) Learning Site | 866-483-6578 | 2600 W. Camelback Road (2nd Floor) | Phoenix, AZ 85017
Sun City, AZ Learning Site | 866-483-6578 | 10484 W. Thunderbird Blvd., Suite 102 | Sun City, AZ 85351

FOR MORE INFORMATION, CONTACT:



The provision of information in this relocation guide is for the convenience of Grand Canyon University ABSN program students, faculty and staff. The providers of various services listed in this guide are solely responsible for presenting information fairly and accurately. Grand Canyon University does not review or verify such information for fairness or accuracy, and the University cannot and does not guarantee or vouch for the fairness or accuracy of the information provided. The provision of information does not constitute and shall not be construed as an endorsement or approval by the University of the provider of services, including the suitability or safety of rental properties or other housing arrangements. Please exercise your good judgment and due diligence when evaluating any services described in this guide. Grand Canyon University is accredited by the Higher Learning Commission (HLCCommission.org), an institutional accreditation agency recognized by the U.S. Department of Education. Please note, not all GCU programs are available in all states and in all learning modalities. Program availability is contingent on student enrollment. For more information on the accreditation of nursing programs and other university approvals, please visit our University Accreditation and Regulations page at gcu.edu/CONHCPAccreditation. Important policy information is available in the University Policy Handbook at gcu.edu/academics/academic-policies.php. The information printed in this material is accurate as of AUGUST 2024. For the most up-to-date information about admission requirements, tuition, scholarships and more, visit gcu.edu. Approved by the Associate Dean of the College of Nursing and Health Care Professions on Aug. 12, 2024. ©2024 Grand Canyon University 24GCU00243