

absn.gcu.edu



Welcome to Phoenix, Arizona

Your path to nursing begins here.

GRAND CANYON
UNIVERSITY®

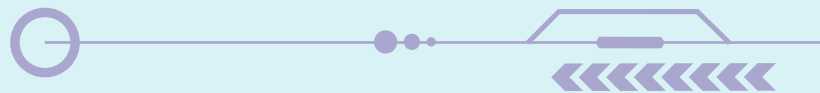
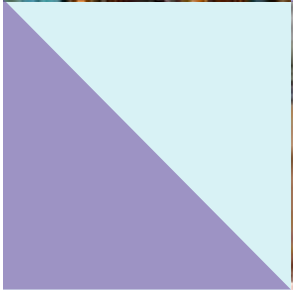
Find your purpose. Live your passion.

You no longer have to wait to start nursing school. Our ABSN program can put you on an accelerated path to the profession, with three start dates a year. So as you consider relocating to Phoenix to begin your education, we thought it would be helpful to provide a snapshot of what life in southern Arizona is like.



Table of Contents

City Character	3
Local Economy	4
Lay of the Land	5
Suitable Suburbs	6-7
Area Apartments	8
Cultural Oasis.....	9-10
Outdoor Destinations	11
Natural Wonders.....	12-13
Sports Scene.....	14
Good Eats	15-16
Local Directory	17
Shopping Destinations.....	18



City Character

Every city has a unique story to tell and we're about to showcase what makes Phoenix one of a kind.



Located in Maricopa County, Phoenix is the state capital and largest city in Arizona, with an estimated population of nearly 1.7 million*. The city anchors a sprawling metropolitan area known as the Valley of the Sun (Greater Phoenix) — an area that spans 2,000 square miles and has nearly 4.5 million residents.

Phoenix has a thriving job market and a variety of ways to enjoy the nice weather and beautiful desert landscape. It also has modern sports stadiums as well as updated arts and shopping districts in and around the downtown area.

*July 1, 2019
Source: U.S. Census Bureau, 2018



.....

Did you know?

Phoenix — like most of Arizona, doesn't observe daylight savings time to conserve energy. As the summer temperatures rise, so does the use of air conditioners—creating a spike in power usage. The extra hour of sunlight prompts people to run their cooling systems even longer.

Local Economy

Greater Phoenix has a diverse economy, with education, finance, health care, technology and tourism among its top industry segments.

HEALTH CARE SECTOR





Of the top 25 largest employers in Phoenix, five of them provide health care services.

- Banner Health
- Dignity Health
- Scottsdale Health Care
- Mayo Clinic Hospital
- Abrazo Health Care



COST OF LIVING

The cost of living in Phoenix is 3.7% higher than the national average. When comparing Phoenix to cities of similar size, it has a relatively low cost of living, so a hard-earned dollar tends to stretch a bit further here.

COST OF LIVING	PHOENIX	ARIZONA	USA
Overall 	103.7	102.2	100
Grocery 	97.3	96.1	100
Utilities 	101.8	102.7	100
Housing 	103.5	107.8	100

100 = National Average

Source: Sperling's Best Places



COST OF LIVING CALCULATOR

See how the cost of living in Phoenix compares to your current city of residence.

[bankrate.com/calculators/savings/moving-cost-of-living-calculator](https://www.bankrate.com/calculators/savings/moving-cost-of-living-calculator)

Lay of the Land

Offering plenty of sunshine, consistent warm temperatures and a diverse terrain, Greater Phoenix is an outdoor paradise most of the year.



MOUNTAIN RANGES

Greater Phoenix sits in a very large valley with mountain ranges on all sides. The area is home to the Belmont Mountains, Big Horn Mountains, Eagletail Mountains, Estrella Mountains, Goldfield Mountains, McDowell Mountains, Phoenix Mountains, South Mountains and White Tank Mountains.

SONORAN DESERT

Phoenix is the largest city within the Sonoran Desert, which covers approximately 100,000 square miles in southwestern Arizona and southeastern California, as well as most of Baja California and the western half of Sonora, Mexico.

While the Sonoran is the hottest desert in North America, the winter nights here are capable of cultivating freezing conditions. It's also one of the wettest and greenest deserts in North America due to the 3-15 inches of rainfall it gets every year.

CLIMATE

Greater Phoenix gets more sun than any other major U.S. metro area, with 85 percent of its daylight hours made up of sunshine. The area has an average annual rainfall of 7.66 inches, with July and August having the most precipitation. In general, the winters are mild and the summers are scorches, with 46 degrees Fahrenheit the average low in January and 106 degrees Fahrenheit the average high in July.

Sources: VisitPhoenix.com, U.S. Climate Data, DesertUSA.com

For the Record

The hottest temperature on record for Phoenix was 122 degrees Fahrenheit at Sky Harbor International Airport on June 26, 1990.



Suitable Suburbs

Greater Phoenix comprises several cities and suburbs. These six areas are less than 30 miles from Phoenix and within close proximity to our ABSN program site.



Peoria



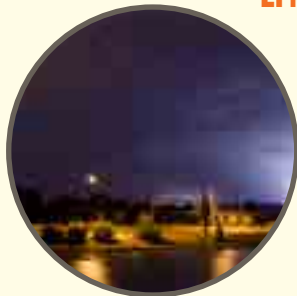
Sun City



El Mirage



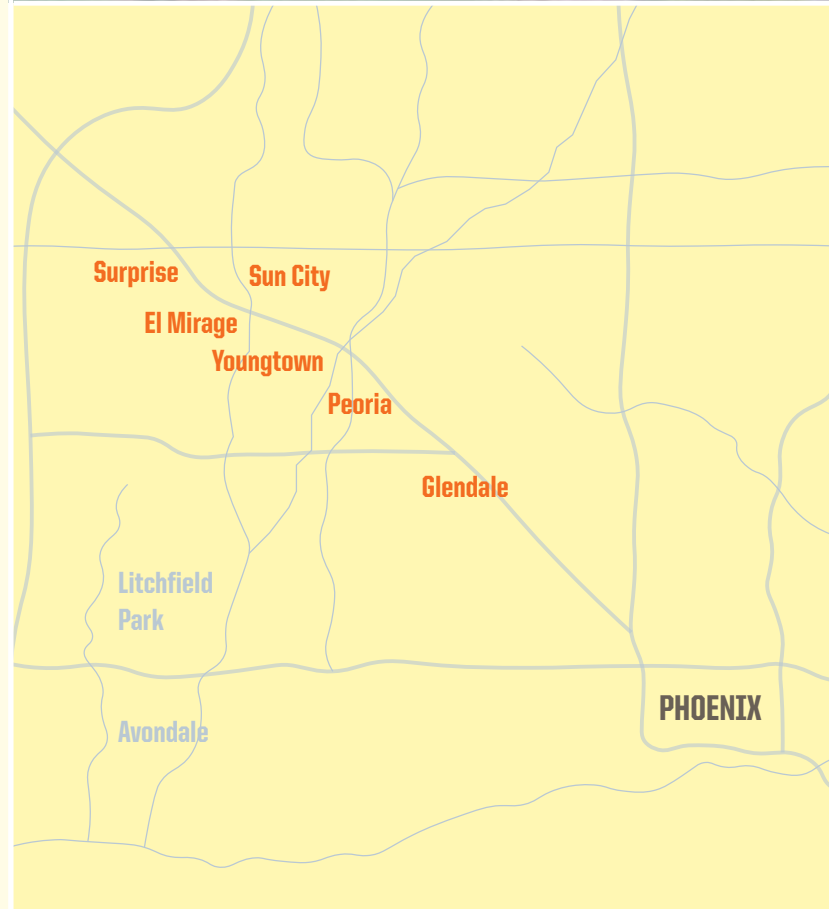
Glendale



Youngtown



Surprise



Suitable Suburbs



Peoria

A large suburb that's home to families and young professionals. Overall, it's a diverse community with several parks and various outdoor activities.

peoriaaz.gov



Glendale

A large, diverse suburb with many families and young professionals, featuring several parks and outdoor activities. glendaleaz.com



Youngtown

A small suburb that many families call home. Overall, it's a diverse community with several parks and various outdoor activities. It's also one of the few Phoenix suburbs where most of the residents rent their homes. youngtownaz.org



El Mirage

A rural, family-friendly, medium-sized suburb. Overall, it's a diverse community with several parks and various outdoor activities.

elmirageaz.gov



Sun City

Home to our ABSN program site, this medium-sized suburb has a significant retirement population. This quiet unincorporated community offers several parks and various outdoor activities. suncityaz.org



Surprise

A fairly large suburb that's home to a good mix of families, young professionals and retirees. This diverse community features several parks and various outdoor activities. surpriseaz.gov

Area Apartments

Greater Phoenix has numerous apartments to choose from. Here are five complexes located less than five miles from our ABSN program site.

Elevation Plaza Del Rio

13310 N. Plaza Del Rio Blvd., Peoria, AZ 85381
623-300-2144 | elevationpdr.com

Fountain Palms Apartments

8820 W. Bell Road, Peoria, AZ 85382
623-552-2597 | fountainpalmsapts.com

Marquis at Arrowhead

17374 N. 89th Ave., Peoria, AZ 85382
844-872-8137 | cwsapartments.com

Natura Villas

10847 W. Olive Ave., Peoria, AZ 85345
623-321-4874 | arizona.weidner.com

Visions Apartments

13720 N. 88th Ave., Peoria, AZ 85381
623-745-1923 | arizona.weidner.com



Elevation Plaza Del Rio



Fountain Palms Apartments



Marquis at Arrowhead



Natura Villas



Visions Apartments



Cultural Oasis

Greater Phoenix has an affinity for the arts, with an abundance of performance theaters, concert halls and museums.

Arizona Opera

Producing fully-staged operas, concerts and collaborative programs throughout the state, the opera presents artists of both international stature and emerging talent. azopera.org

Arizona Science Center

The center provides exploration, education and entertainment for all ages. It has four levels of exciting exhibits, a state-of-the-art planetarium and a five-story, giant-screen theater.

azscience.org

Ballet Arizona

Offering a full season of performances, Ballet Arizona is home to professional dancers who create, perform and teach classical and contemporary ballet. balletaz.org



Cultural Oasis



Phoenix Art Museum

Home to a permanent collection of more than 17,000 objects, the museum features classic and contemporary works from around the world. It also hosts national and international traveling exhibits. phxart.org

The Phoenix Symphony

Known for its awe-inspiring classics and pops concerts, this symphony is the only full-time symphony orchestra in Arizona. It's also the state's largest performing arts organization. phoenixsymphony.org

The Phoenix Theatre Company

Dubbed "Arizona's longest-running arts organization," the theatre has produced over 1,000 productions since its start in 1920. It features main stage productions, theater for children and the Hormel New Works Festival. phoenixtheatre.com

Wells Fargo History Museum

Home to an authentic 19th-century stagecoach, antique firearms, a working telegraph and more, the museum showcases historical artifacts that depict western development. It also has a replica gold mine and the largest collection of western-themed oil paintings by well-known illustrator N.C. Wyeth.

wellsfargohistory.com/museums/phoenix



Outdoor Destinations

Greater Phoenix is not your typical garden-variety locale. It's home to a diverse mix of lush foliage and animal species.



Desert Botanical Garden

Featuring five thematic trails, the garden has more than 50,000 desert plants on display. It also hosts a variety of exhibits and events throughout the year. dbg.org

Phoenix Zoo

One of the largest non-profit zoos in the country, the zoo cares for more than 3,000 animals that represent nearly 400 species, from the African lion to the Mexican gray wolf. phoenixzoo.org

Wildlife World

Equal parts zoo, aquarium and safari park, this unique wildlife destination is home to more than 6,000 animals that represent more than 600 exotic and endangered species. wildlifeworld.com

Encanto Park

This 220-acre lush oasis has amenities that include a fishing lagoon, swimming pool, sports complex, two golf courses and the Enchanted Island Amusement Park. phoenix.gov

Japanese Friendship Garden

This authentic 3.5-acre stroll garden features over 1,500 tons of hand-picked rock, stone footbridges, lanterns and more than 50 varieties of plants. japanesefriendshipgarden.org

Sonoran Preserve

Located in north Phoenix, the preserve sits on more than 9,600 acres and offers 36 miles of trails by way of three trailhead locations — Desert Vista, Desert Hills and Apache Wash. phoenix.gov



Natural Wonders

Maricopa County has one of the largest regional parks systems in the nation with over 120,000 acres of open space, including hundreds of miles of trails, campgrounds and nature centers. While there are 12 parks in the system, these five are near our ABSN program site. maricopacountyparks.net

1. Adobe Dam Regional Park

Sitting at the base of the Hedgepeth Hills in north Phoenix, this 1,526-acre park offers more recreation than natural encounters. It's home to a sports complex with six baseball fields, the 18-hole 500 Club Championship Golf Course, Six Flags Hurricane Harbor waterpark and more.

2. Estrella Mountain Regional Park

Located near the meeting of the Gila and Agua Fria Rivers in the southwest Valley, the nearly 20,000-acre park offers a wide variety of activities, including baseball, biking, fishing, golfing, hiking and horseback riding. It also has the only grass picnic area (65 acres) within the county park system.



Stargazing

Maricopa County Parks hosts "Stargazing for Everyone" programs on Saturday nights that provide opportunities to view and learn about the moon, planets and galaxies.

stargazingforeveryone.com



Natural Wonders

3. Lake Pleasant Regional Park

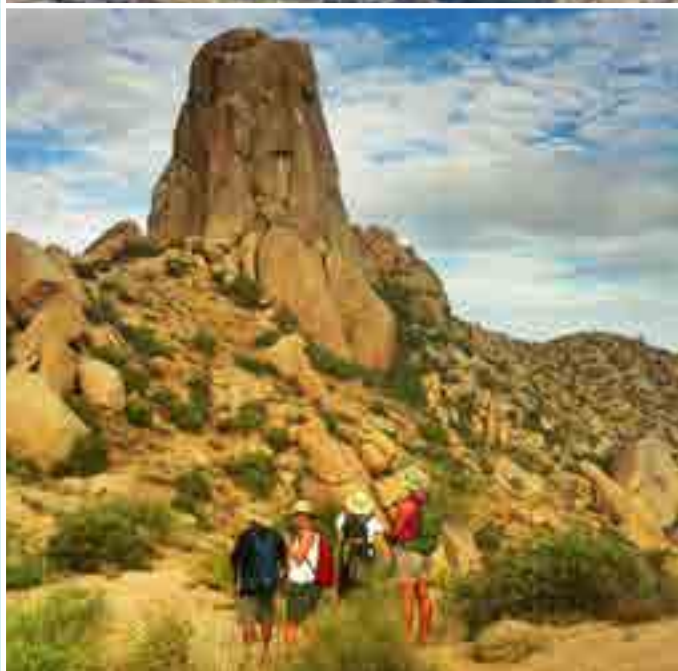
Located in the northwest Valley, the 23,000-acre park is one of the most scenic water recreation areas in the county. It offers several activities, including camping, boating, fishing, swimming, hiking, picnicking and wildlife viewing.

4. McDowell Mountain Regional Park

Nestled in the lower Verde River basin, the 21,099-acre park is a desert jewel in the northeast Valley, with more than 50 miles of multi-use trails that offer plenty of opportunities to see deer, javelina, birds and coyotes. Elevations in the park rise to 3,000 feet along the western boundary at the base of the McDowell Mountains.

5. White Tank Mountain Regional Park

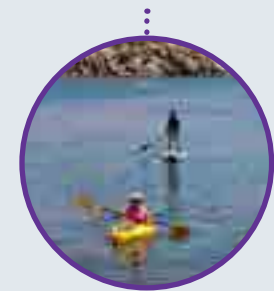
Located on the west side of the Valley, the 30,000-acre park is the largest regional park in the county. Much of the park comprises the rugged and beautiful White Tank Mountains, with opportunities to bike, camp, hike, horseback ride and picnic.



Paddle the Lower Salt River

Take a kayak or paddleboard tour of the Lower Salt River in Tonto National Forest and discover the wild mustangs that roam the area.

Locals believe the herd descends from the Spanish horses brought to Arizona in the 1600s. Local outfitters include 360-adventures.com and destinations.rei.com/Arizona.



Sports Scene

Phoenix is a city that's got game, featuring teams in all four major professional sports leagues. It also hosts several signature sporting events throughout the year, including the PGA Tour Phoenix Open and college football's Fiesta Bowl.



Arizona Cardinals

National Football League (NFL)
State Farm Stadium
azcardinals.com

Phoenix Suns

National Basketball Association (NBA)
Talking Stick Resort Arena
nba.com/suns

Arizona Diamondbacks

Major League Baseball (MLB)
Chase Field
mlb.com/dbacks

Arizona Coyotes

National Hockey League (NHL)
Gila River Arena
nhl.com/coyotes



Good Eats

From hole-in-the-wall eateries to gourmet dining experiences, Greater Phoenix is a melting pot of flavor that's worth savoring. Here's just a taste of some of the area's best restaurants.

Chula Seafood

A family-owned and operated fishery that purveys high-quality, fresh fish from the Pacific Coast.

chulaseafood.com

Geordie's Restaurant

A gourmet eatery in the historic Wrigley Mansion that serves various European dishes.

wrigleymansion.com

Hana Japanese Eatery

A small and bustling authentic Japanese food and sushi restaurant.

hanajapaneseeatery.com

Los Andes

A gastronomic journey through hundreds of years of Peruvian cuisine.

losandesphx.com



Good Eats



Persepshen

A sustainable, local and organic restaurant with scratch-made dishes and a seasonally driven menu.

persepshenarizona.com

Saint Pasta

Founded by best friends from New Jersey, this is the place to go for authentic Italian-American classics.

saintpasta.com

Tacos Chiwas

A family-owned restaurant that imbues classic northern Mexican food with craft and soul.

tacoschiwas.com

Thai E-San

A hotspot for authentic Thai food that delivers on price and serving size.

thaiesanphx.com

The Fry Bread House

An authentic, award-winning restaurant that serves traditional Tohono O'odham food.

facebook.com/frybreadhouse

Local Directory



GOVERNANCE

City of Phoenix
phoenix.gov

Maricopa County
maricopa.gov

Arizona Department of Transportation
azdot.gov/business/district-contacts/contacts-central-district

Arizona Office of Economic Opportunity
oeo.az.gov

ANNUAL EVENTS

arizona-leisure.com/phoenix-events-festivals

ADDITIONAL RELOCATION INFORMATION

phoenixrelocationguide.com/ebook



UTILITIES

Arizona Public Service
aps.com

Arizona Water Company
azwater.com

Southwest Gas Corporation
swgas.com

NEWS OUTLETS

Arizona Republic
azcentral.com

East Valley Tribune
eastvalleytribune.com

Phoenix Business Journal
bizjournals.com/phoenix

Phoenix New Times
phoenixnewtimes.com

TV STATIONS

ABC 15
abc15.com

CBS 5
azfamily.com

Fox 10
fox10phoenix.com

NBC 12
12news.com

RADIO STATIONS

90.3 – Christian Contemporary
myflr.org

92.7 – Oldies
oldies927az.com

94.5 – Classic Hits
kool.radio.com

95.5 – Adult Hits
955themountain.iheart.com

96.9 – 90s to Today
mix969.iheart.com

99.9 – Adult Contemporary
kez999.iheart.com

101.5 – Top-40
live1015phoenix.radio.com

102.5 – Country
knixcountry.iheart.com

Shopping Destinations

Arrowhead Towne Center
arrowheadtownecenter.com

Desert Ridge Marketplace
shopdesertridge.com

Tempe Marketplace
tempemarketplace.com

The Shops at Norterra
reddevelopment.com/properties/the-shops-at-norterra

Uptown Plaza
uptownplazaphx.com



absn.gcu.edu



GRAND CANYON UNIVERSITY®

ABSN Learning Site | 10484 West Thunderbird Blvd. | Sun City, Arizona 85351
866-483-6578

For more information on the accreditation of nursing programs and other university licensures, please visit our University Accreditation and Regulations page at [gcu.edu/CONHCPAccreditation](https://www.gcu.edu/CONHCPAccreditation). Please note, not all GCU programs are available in all states and in all learning modalities. Program availability is contingent on student enrollment. Grand Canyon University is accredited by the Higher Learning Commission ([hlcommission.org](https://www.hlcommission.org)), an institutional accreditation agency recognized by the U.S. Department of Education. Important information is available in the University Policy Handbook at <https://www.gcu.edu/academics/academic-policies.php>. The information printed in this material is accurate as of NOVEMBER 2021. For the most up-to-date information about admission requirements, tuition, scholarships and more, visit the University Policy Handbook on [gcu.edu](https://www.gcu.edu). ©2021 Grand Canyon University 21CON0111

The provision of information in this relocation guide is for the convenience of Grand Canyon University ABSN program students, faculty and staff. The providers of various services listed in this guide are solely responsible for presenting information fairly and accurately. Grand Canyon University does not review or verify such information for fairness or accuracy, and the University cannot and does not guarantee or vouch for the fairness or accuracy of the information provided. The provision of information does not constitute and shall not be construed as an endorsement or approval by the University of the provider of services, including the suitability or safety of rental properties or other housing arrangements. Please exercise your good judgment and due diligence when evaluating any services described in this guide.