

gcu.edu/ABSN



Welcome to Salt Lake City, Utah

Your path to nursing begins here



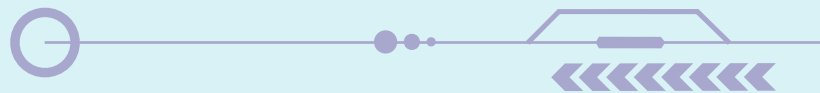
Find your purpose

You no longer have to wait to start nursing school. Our ABSN program can put you on an accelerated path to this profession with three start dates a year. As you consider relocating to Salt Lake City to begin your education, we thought it would be helpful to provide a snapshot of what life in Utah is like.



Table of Contents

Neighborhoods.....	3
Things To Do.....	4
Local Directory.....	5



Neighborhoods

Salt Lake City comprises several cities and suburbs. These 11 areas are less than 30 miles from Salt Lake City and within close proximity to our Sandy (Salt Lake City area) learning site.



Bluffdale



Holladay



Riverton



Sugar House



Daybreak



Murray



Sandy



Taylorsville



Herriman



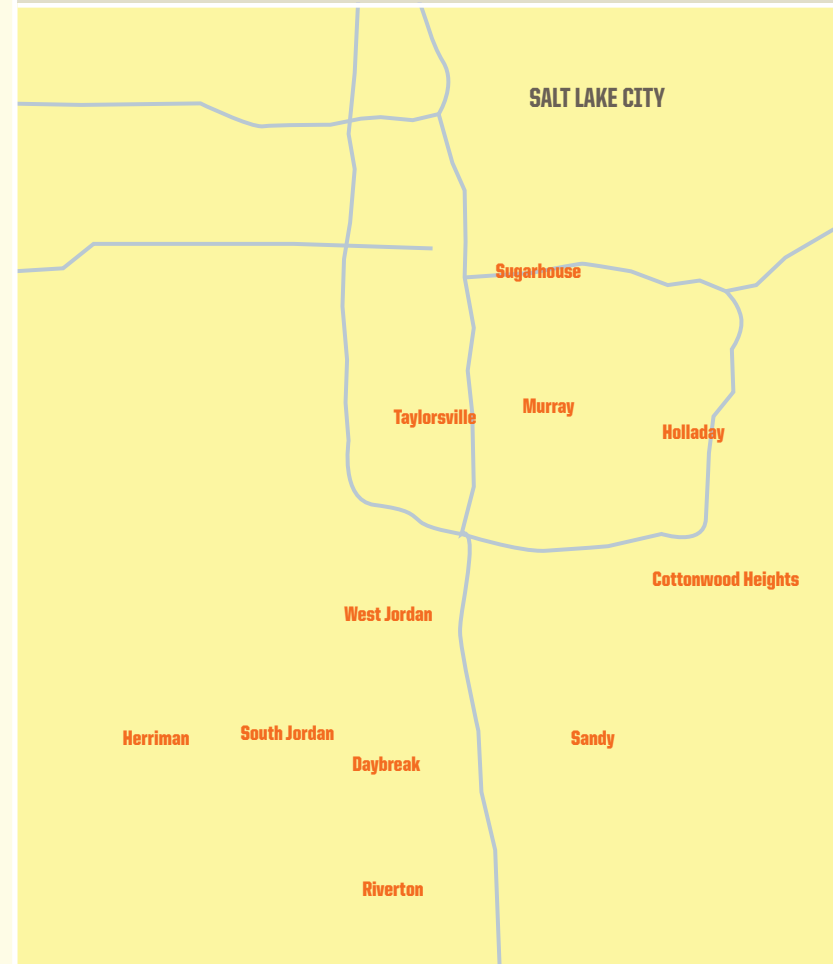
Cottonwood Heights



South Jordan



West Jordan



Need assistance securing housing near our satellite campus?



Our proud partner, Openshaw Real Estate Group, can help! Reach out today to take advantage of their complimentary resources.

ABSNHousing.com | 480-613-8061 | info@OpenshawRealEstateGroup.com



Things To Do

Sitting in a mountain bowl 4,300 feet up, Salt Lake City has many forms of adventure you could need with multiple ski resorts, a lineup of canyons offering hiking, biking, climbing and camping as well as a great lake for boating and swimming. The city offers plenty to do indoors, too, with concert venues, a variety of delicious restaurants and plenty of churches, theatres and museums.



TAKE A DAY TRIP

Bonneville Salt Flats (Approx. 2 hour drive from Salt Lake City) In just a couple of hours, you can visit this incredibly unique destination where hot temperatures create mirage-like images that can make you feel like you're on another planet.

Sundance Mountain Resort (Approx. 1 hour drive from Salt Lake City) With skiing, snowboarding and snowshoeing in the winter and hiking, mountain biking and horseback riding in the summer, this resort makes for a fun day trip!

Great Salt Lake (Approx. 20 minute drive from Salt Lake City) The largest natural lake west of the Mississippi is a great place to explore and spend the day.

ENJOY THE LOCAL CULTURE

International Peace Gardens at Jordan Park |

InternationalPeaceGardens.org Honoring over 26 countries, the peace garden has become an essential part of Utah history.

Gilgal Gardens | **GilgalGarden.org** A beautiful sculpture garden envisioned, designed and created by Thomas Battersby Child, Jr.

Salt Lake City Public Library | **services.slcp.org** A striking 240,000 square-foot structure housing more than half a million books and other materials.

Natural History Museum of Utah | **nhmu.utha.edu** A beautiful museum illuminating the natural world and the place of humans within it.

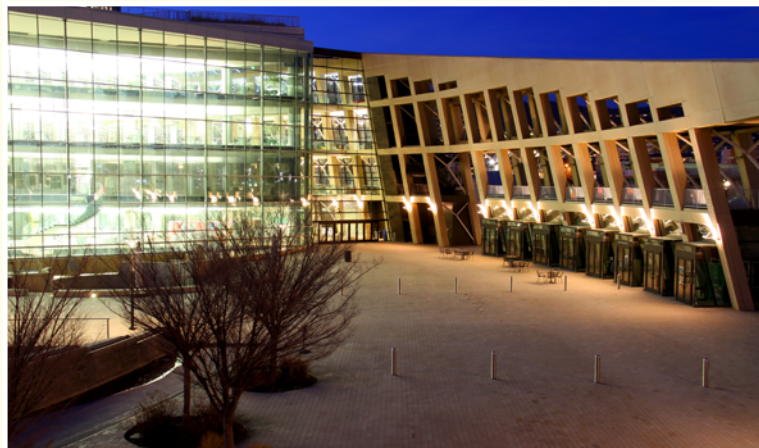
EXPLORE NEARBY NATURE

Liberty Park The city's oldest and second-largest park.

Ensign Peak Park An approachable hike offering a great way to take in the sites of the valley.

Big Cottonwood Canyon A 15-mile long canyon offering a wide range of activities year-round.

Pioneer Park A beautiful park with paths, a playground and sports courts offering a weekly farmers market each summer.



Local Directory



GOVERNANCE

City of Sandy
sandy.utah.gov

Utah Department of Transportation
udot.utah.gov/connect/

Utah Office of Economic Opportunity
business.utah.gov

UTILITIES

Utah Public Service
psc.utah.gov

Sandy Water Company
sandy.utah.gov/1172/public-utilities

Sandy Gas Corporation
DominionEnergy.com/utah

NEWS OUTLETS

The Salt Lake Tribune
SLTrib.com

Utah Business Magazine
UtahBusiness.com

Deseret News SLC
deseret.com

TV STATIONS

Fox 13
fox13now.com

ABC4 News
abc4.com

KSL
ksl.com

2KUTV
kutv.com

RADIO STATIONS

820 AM – Contemporary Christian ChristianRadio.com/teaching-talk/kgnw.html

105.5 FM – Oldies
KoolSLC.com

94.1 FM – Classic Hits
941kodj.iheart.com

100.7 & 105.5 FM – Adult Hits/80's Hits 1007bobfm.com

97.1 FM – Top 40
971zht.iheart.com

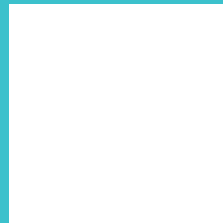
103.5 FM – Classic Rock
1035TheArrow.com

104.3 FM – Country Music
ClassicCountry1043.com



Salt Lake (Sandy, Utah) Learning Site | 866-483-6578
150 Civic Center Drive | Sandy, UT 84070

FOR MORE INFORMATION, CONTACT:



The provision of information in this relocation guide is for the convenience of Grand Canyon University ABSN program students, faculty and staff. The providers of various services listed in this guide are solely responsible for presenting information fairly and accurately. Grand Canyon University does not review or verify such information for fairness or accuracy, and the University cannot and does not guarantee or vouch for the fairness or accuracy of the information provided. The provision of information does not constitute and shall not be construed as an endorsement or approval by the University of the provider of services, including the suitability or safety of rental properties or other housing arrangements. Please exercise your good judgment and due diligence when evaluating any services described in this guide.

Grand Canyon University is accredited by the Higher Learning Commission (HLCCommission.org), an institutional accreditation agency recognized by the U.S. Department of Education. Please note, not all GCU programs are available in all states and in all learning modalities. Program availability is contingent on student enrollment. Important policy information is available in the University Policy Handbook at gcu.edu/academics/academic-policies.php. For more information on the accreditation of nursing programs and other university approvals, please visit our University Accreditation and Regulations page at gcu.edu/CONHCPAccreditation. The information printed in this material is accurate as of JULY 2023. For the most up-to-date information about admission requirements, tuition, scholarships and more, visit gcu.edu. Approved by the Dean of the College of Nursing and Health Care Professions on July 24, 2023. ©2023 Grand Canyon University 23GCU00159