

[gcu.edu/ABSN](http://gcu.edu/ABSN)



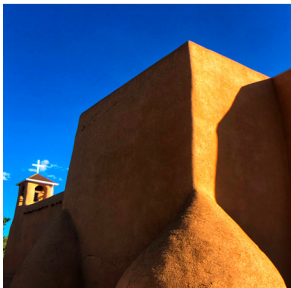
# Welcome to Albuquerque, New Mexico

Your path to nursing begins here



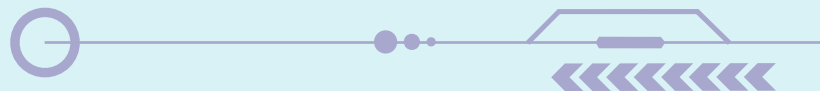
# Find Your Purpose

**You no longer have to wait to start nursing school.** Our ABSN program can put you on an accelerated path to this profession with three start dates per year. As you consider relocating to Albuquerque to begin your education, we thought it would be helpful to provide a snapshot of what life in New Mexico is like.



## Table of Contents

Neighborhoods.....	3
Things To Do.....	4
Local Directory.....	5





# Neighborhoods

**Albuquerque has several neighborhoods** in and around the city, but these are a few of the top choices — each one offering a unique experience:

- Nob Hill
- Sawmill District
- Old Town
- Los Ranchos de Albuquerque
- Railyards
- Corrales
- Rio Rancho
- Bernalillo

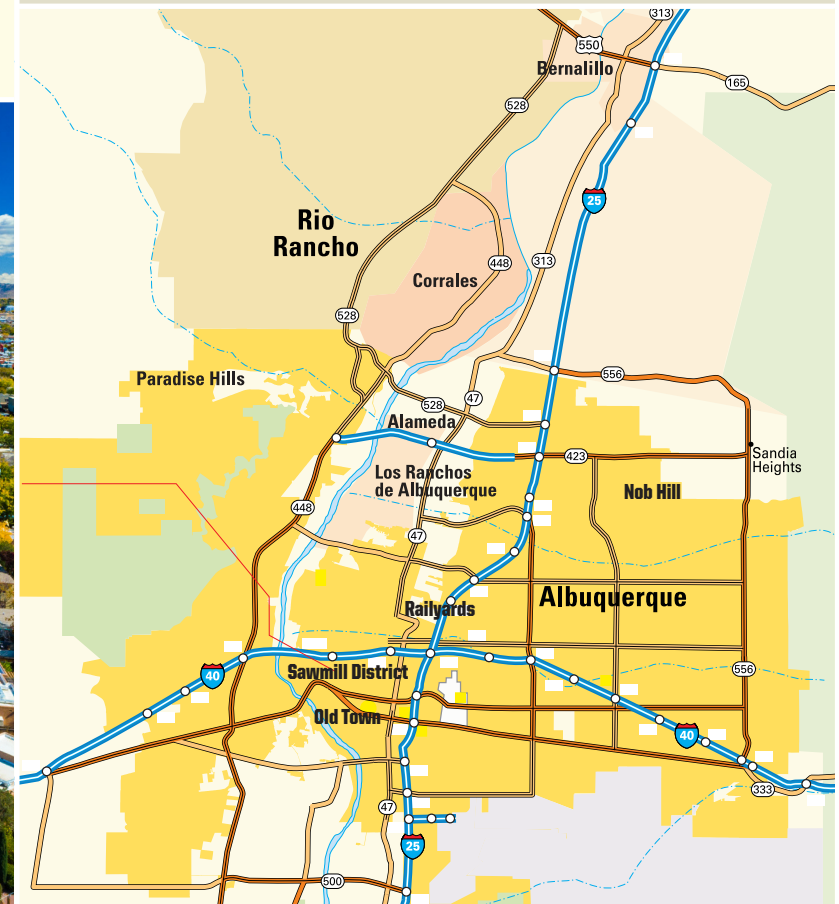


**Need assistance securing housing near our satellite campus?**



Our proud partner, Openshaw Real Estate Group, can help. Reach out today to take advantage of their complimentary resources!

**ABSNHousing.com | 480-613-8061 | info@OpenshawRealEstateGroup.com**





# Things To Do

**Nestled in the picturesque landscapes** of New Mexico, Albuquerque offers a mix of lively culture and outdoor adventure. Surrounded by majestic mountains and central to numerous nearby attractions, this city has become a magnet for those seeking the ultimate southwestern experience. According to the locals, here are the top things to do when you make Albuquerque your new home.



## TAKE A DAY TRIP

**White Sands National Park (3.5-hour drive)** The world's largest all-white gypsum dunes

**Santa Fe (1-hour drive)** A blend of history, modernity and small-town charm

**Taos (2.5-hour drive)** Appreciate the natural beauty of this ski town

## ENJOY LOCAL CULTURE

**Albuquerque BioPark** | [cabq.gov/artsculture/biopark](http://cabq.gov/artsculture/biopark)  
Offering a zoo, beach park and more

**Ancient Ruins** | Experience New Mexico's rich ancient history  
**Indian Pueblo Cultural Center** | [indianpueblo.org](http://indianpueblo.org) Learn about traditional Pueblo culture

**International Balloon Fiesta** | [balloonfiesta.com](http://balloonfiesta.com) Featuring approximately 600 hot-air balloons

**Kimo Theatre** | [cabq.gov/artsculture/kimo](http://cabq.gov/artsculture/kimo) Enjoy live performances, movies and more

**National Hispanic Cultural Center** | [nhccnm.org](http://nhccnm.org) Hispanic exhibitions, performances and more

**National Museum of Nuclear Science and History** | [nuclearmuseum.org](http://nuclearmuseum.org) Learn the history of the atomic age

## EXPLORE NEARBY NATURE

**Bosque Del Apache National Wildlife Refuge** | [fws.gov/refuge/bosque-del-apache](http://fws.gov/refuge/bosque-del-apache) A 57,331-acre refuge for thousands of cranes, geese and ducks

**Jemez Mountains** | Featuring rivers, lakes, waterfalls, wildlife and breathtaking rock formations

**Petroglyph National Monument** | [nps.gov/petr](http://nps.gov/petr) One of the largest petroglyph sites in North America

**Rio Grande Nature Center** | [rgnc.org](http://rgnc.org) Endless trails, ponds, native vegetation and wildlife

**Sandia Mountain Wilderness** | [fs.usda/recarea/cibola](http://fs.usda/recarea/cibola) Hiking, biking and camping amidst breathtaking landscape

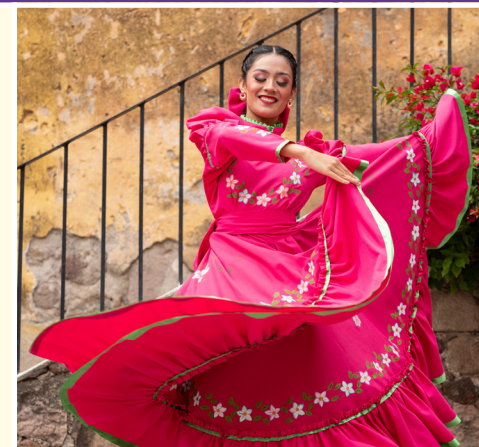
**Sandia Peak Tramway** | [sandiapeak.com](http://sandiapeak.com) 360-degree view from nearly 10,500 feet

**Santa Rosa Blue Hole** | [santarosabluehole.com](http://santarosabluehole.com) An 80-foot-deep watering hole featuring various activities

**Valles Caldera** | [nps.gov/vall/index.htm](http://nps.gov/vall/index.htm) 13-mile-wide volcanic eruption site

## YOUR HOME TEAMS

**Albuquerque Isotopes (Baseball)** | [milb.com/Albuquerque](http://milb.com/Albuquerque)  
**New Mexico United (Soccer)** | [newmexicoutd.com](http://newmexicoutd.com)





# Local Directory



## GOVERNANCE

**Mayor Tim Keller**  
City of Albuquerque  
[cabq.gov](http://cabq.gov)

**Bernalillo County**  
[bernco.gov](http://bernco.gov)

## UTILITIES

**Electricity:** Public Service Company of New Mexico (PNM)

**Gas:** New Mexico Gas Company (NMGCO)

**Telecommunications:** CenturyLink, Comcast, Sparklight

**Water/Trash:** Water Utility Authority

## NEWS OUTLETS

**Albuquerque Journal**  
[abqjournal.com](http://abqjournal.com)

**KRQE** | [krqe.com](http://krqe.com)

**KOB 4** | [kob.com](http://kob.com)

## TV STATIONS

**KOB 4** | [kob.com](http://kob.com)

**KRQE** | [krqe.com](http://krqe.com)

**KOAT-7** | [koat.com](http://koat.com)

## RADIO STATIONS

**92.3 — KRST FM** | [923krst.com](http://923krst.com)

**93.3 — The Q FM** | [933theq.com](http://933theq.com)

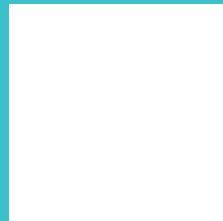
**100.3 — The Peak**  
[1003thepeak.iheart.com](http://1003thepeak.iheart.com)

**103.3 — ED FM** | [ED FM | ed.fm](http://EDFM|ed.fm)



Albuquerque, NM Learning Site | 866-483-6578  
6200 Jefferson St NE, Suite 300 | Albuquerque, NM 87109

## FOR MORE INFORMATION, CONTACT:



The provision of information in this relocation guide is for the convenience of Grand Canyon University ABSN program students, faculty and staff. The providers of various services listed in this guide are solely responsible for presenting information fairly and accurately. Grand Canyon University does not review or verify such information for fairness or accuracy, and the University cannot and does not guarantee or vouch for the fairness or accuracy of the information provided. The provision of information does not constitute and shall not be construed as an endorsement or approval by the University of the provider of services, including the suitability or safety of rental properties or other housing arrangements. Please exercise your good judgment and due diligence when evaluating any services described in this guide.

Grand Canyon University is accredited by the Higher Learning Commission (HLCcommission.org), an institutional accreditation agency recognized by the U.S. Department of Education. Please note, not all GCU programs are available in all states and in all learning modalities. Program availability is contingent on student enrollment. Important policy information is available in the University Policy Handbook at [gcu.edu/academics/academic-policies.php](http://gcu.edu/academics/academic-policies.php). For more information on the accreditation of nursing programs and other university approvals, please visit our University Accreditation and Regulations page at [gcu.edu/CONHCPAccreditation](http://gcu.edu/CONHCPAccreditation). The information printed in this material is accurate as of MARCH 2024. For the most up-to-date information about admission requirements, tuition, scholarships and more, visit [gcu.edu](http://gcu.edu). Approved by the Dean of the College of Nursing and Health Care Professions on Feb. 5, 2024. ©2024 Grand Canyon University 23GCU00268