

gcu.edu/ABSN



Welcome to Boise (Meridian), Idaho

Your path to nursing begins here



Find Your Purpose

You no longer have to wait to start nursing school. Our ABSN program can put you on an accelerated path to this profession with three start dates a year. As you consider relocating to Meridian to begin your education, we thought it would be helpful to provide a snapshot of what life in Idaho is like.

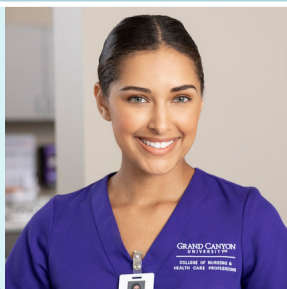
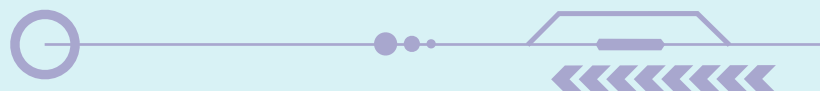
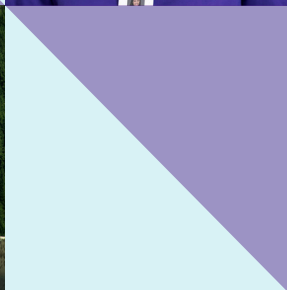


Table of Contents

Neighborhoods.....	3
Things To Do	4
Local Directory	5



Neighborhoods

Greater Boise comprises several cities and suburbs in addition to Meridian.

These four are within 30 miles of our Meridian, Idaho ABSN program site.



Boise



Caldwell



Middleton



Kuna



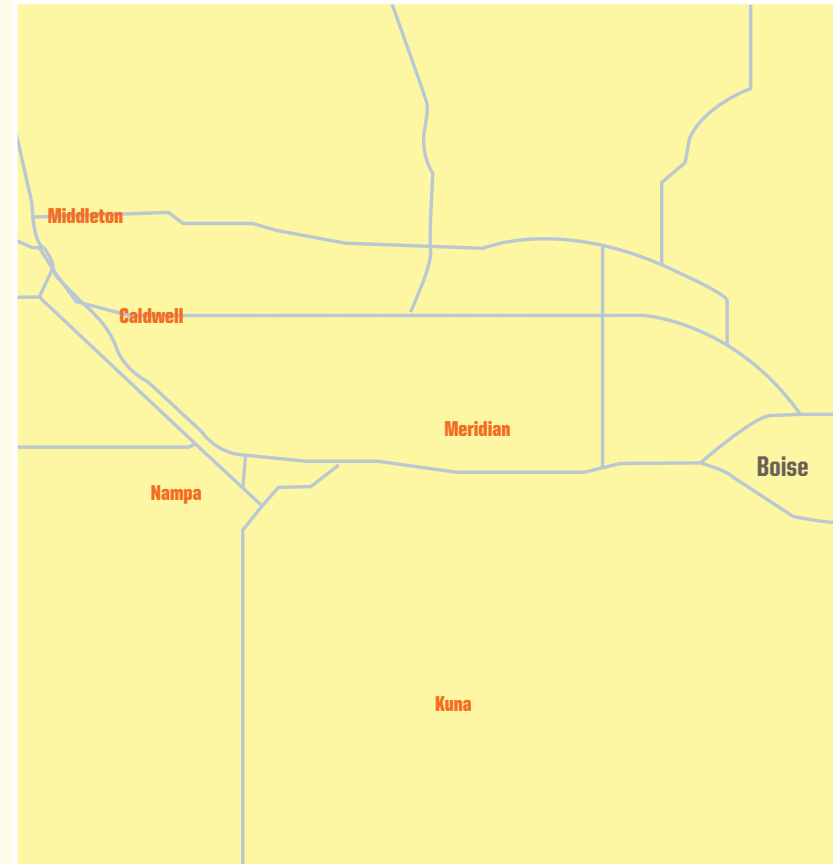
Nampa

Need assistance securing housing near our satellite campus?



Our proud partner, Openshaw Real Estate Group, can help. Reach out today to take advantage of their complimentary resources!

ABSNHousing.com | 480-613-8061 | info@OpenshawRealEstateGroup.com



Things To Do

With an abundance of beautiful mountains, clear blue lakes and charming small towns, it's no wonder so many choose Idaho as their outdoor getaway destination. According to locals, here are the top things to do when you move to Meridian.



TAKE A DAY TRIP

Bruneau Dunes State Park (Approx. 1 hour drive from Meridian) Boasting the tallest single-structured sand dune in North America with a peak rising 470 feet above the surrounding desert floor,¹ this day trip is a must-do.

McCall, ID (Approx. 2.5 hour drive from Meridian) This beautiful town on Payette Lake is small enough to feel private while providing plenty of fun things to do.

Sun Valley, ID (Approx. 2.75 hour drive from Meridian) A stunning resort town in south-central Idaho, Sun Valley is known for its ski areas, but offers beautiful trails and wildflower-filled meadows every summer.

¹Idaho State Parks and Recreation, n.d. [Bruneau Dunes State Park](#). Retrieved on July 2, 2024.

ENJOY THE LOCAL CULTURE

Idaho Botanical Garden | [IdahoBotanicalGarden.org](#)

A peaceful, 15-acre haven in the Boise Foothills dedicated to connecting people, plants and nature.

Discovery Center of Idaho | [DCIdaho.org](#) From world-class exhibitions, presentations with community experts and hands-on displays, there's always something new and exciting for guests to experience.

Boise Art Museum | [BoiseArtMuseum.org](#) Idaho's only collecting art museum, BAM serves as a cultural gem attracting art and artists from around the world.

World Center for Birds of Prey | [PeregrineFund.org](#) An international non-profit organization conserving endangered raptors around the world.

Zoo Boise | [ZooBoise.org](#) Enjoy a wide array of animal exhibits, a conservation cruise, butterfly area and more.

EXPLORE NEARBY NATURE

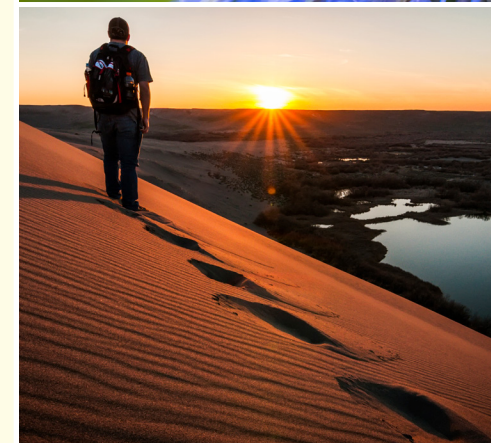
Bogus Basin Recreation Area A year-round destination for outdoor fun with hiking, mountain biking and downhill skiing.

Brundage Mountain A classic Idaho ski resort with amazing terrain and a friendly vibe.

Lake Lowell Park A beautiful city park offering swimming, birdwatching, hiking and more.

Boise National Forest Over 2.5 million acres of diverse forest and grassland, more than 500 trails and over 250 lakes and reservoirs.

Lucky Peak State Park A perfect getaway for swimming, picnicking, fishing, boating, biking and more.



Local Directory



GOVERNANCE

City of Meridian
MeridianCity.org

Ada County
AdaCounty.id.gov

UTILITIES

Sparklight
Sparklight.com

Idaho Power
IdahoPower.com

**The City of Meridian Utility
 Billing Division**
MeridianCity.org/finance

Intermountain Gas Company
INTGas.com

NEWS OUTLETS

Idaho Press
IdahoPress.com

Idaho Statesman
IdahoStatesman.com

Post Register
PostRegister.com

TV STATIONS

CBS2
IdahoNews.com

IdahoNews6
KIVITV.com

RADIO STATIONS

97.5 – Higher Rock Radio
HigherRockRadio.org

105.5 – Power 105.5
Power105Boise.com

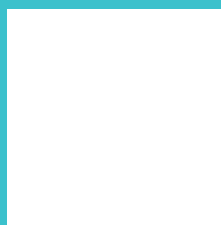
96.9 – The Eagle Classic Rock
KKGL.com/shows/96-9-the-eagle

92.3 – Country
KIZN.com



Boise (Meridian, ID) Learning Site | 866-483-6578
1144 S. Silverstone Way, Suite 200 | Meridian, ID 83642

FOR MORE INFORMATION, CONTACT:



The provision of information in this relocation guide is for the convenience of Grand Canyon University ABSN program students, faculty and staff. The providers of various services listed in this guide are solely responsible for presenting information fairly and accurately. Grand Canyon University does not review or verify such information for fairness or accuracy, and the University cannot and does not guarantee or vouch for the fairness or accuracy of the information provided. The provision of information does not constitute and shall not be construed as an endorsement or approval by the University of the provider of services, including the suitability or safety of rental properties or other housing arrangements. Please exercise your good judgment and due diligence when evaluating any services described in this guide.

Grand Canyon University is accredited by the Higher Learning Commission (HLCommission.org), an institutional accreditation agency recognized by the U.S. Department of Education. Please note, not all GCU programs are available in all states and in all learning modalities. Program availability is contingent on student enrollment. Important policy information is available in the University Policy Handbook at gcu.edu/academics/academic-policies.php. For more information on the accreditation of nursing programs and other university approvals, please visit our University Accreditation and Regulations page at gcu.edu/CONHCPAccreditation. The information printed in this material is accurate as of JULY 2024. For the most up-to-date information about admission requirements, tuition, scholarships and more, visit gcu.edu. Approved by the Dean of the College of Nursing and Health Care Professions on July 15, 2024. ©2024 Grand Canyon University 24GCU00235