

gcu.edu/ABSN



Welcome to St. Louis, Missouri

Your path to nursing begins here



Find Your Purpose

You no longer have to wait to start nursing school. Our ABSN program can put you on an accelerated path to this profession with three start dates a year. As you consider relocating to St. Louis to begin your education, we thought it would be helpful to provide a snapshot of what life in Missouri is like.

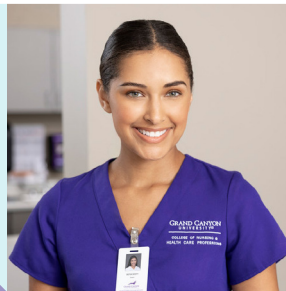
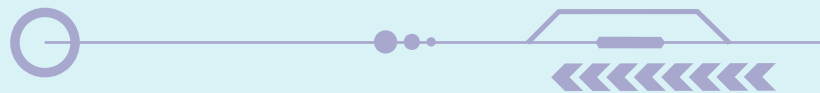
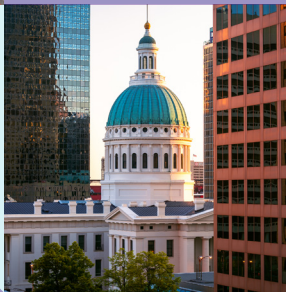


Table of Contents

Neighborhoods.....	3
Things To Do.....	4
Local Directory	5



Neighborhoods

St. Louis comprises several cities and suburbs. These six are within close proximity to our St. Louis ABSN program site.



Creve Coeur

Creve Coeur

Ladue

Maryland Heights

Olivette

St. Charles

University City



St. Charles

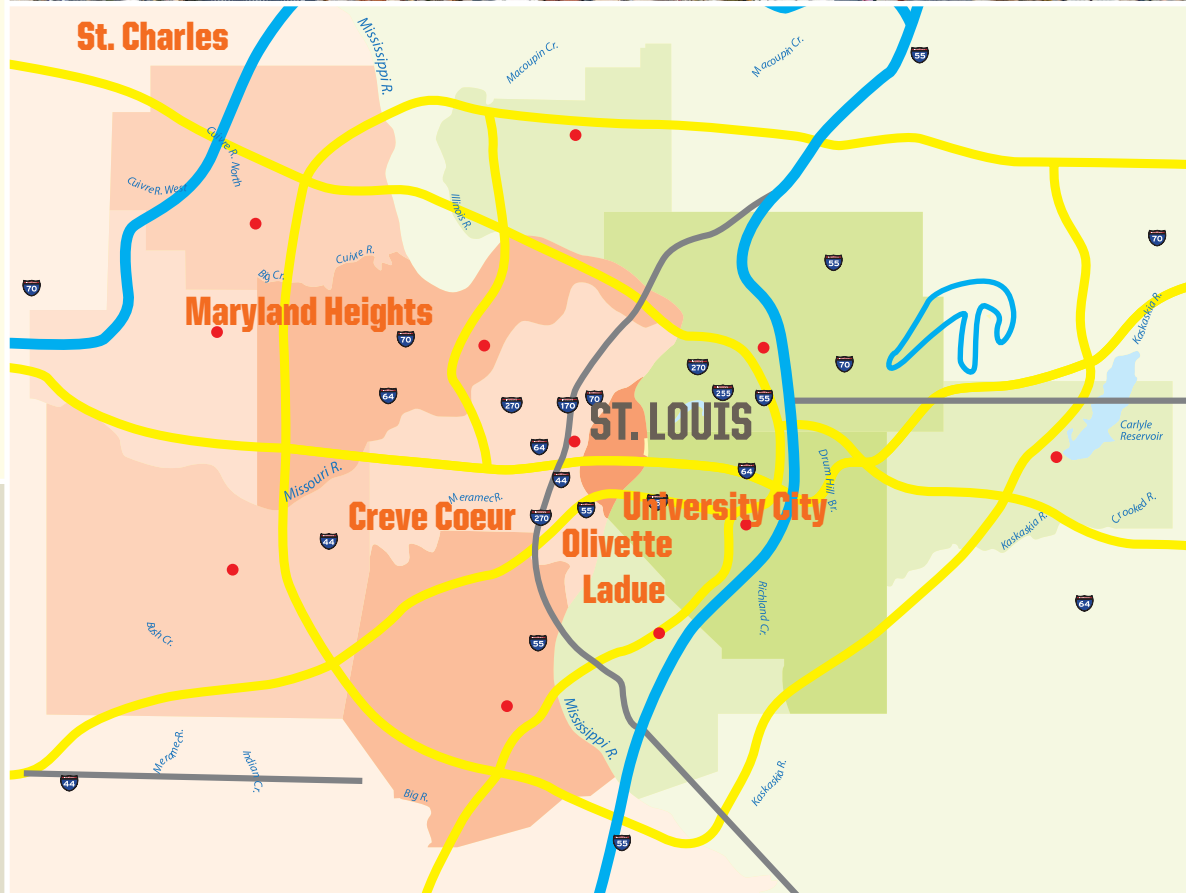


University City

Need assistance securing housing near our satellite campus?

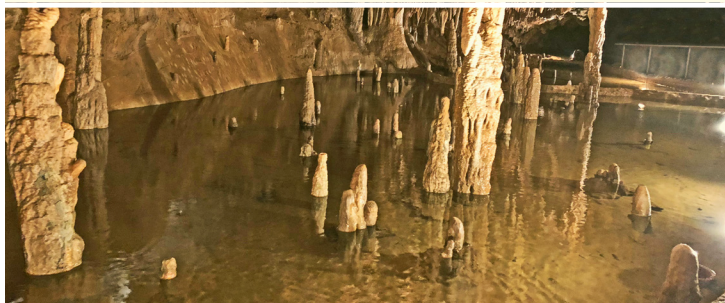
Our proud partner, Openshaw Real Estate Group, can help! Reach out today to take advantage of their complimentary resources.

ABSNHousing.com | 480-613-8061
info@OpenshawRealEstateGroup.com



Things To Do

Whether you're an urban explorer or outdoor adventurer, St. Louis has something for you! Think attractions, a bustling arts and culture scene and miles of trails, waterways and public parks. It can be hard to decide what to check out first, but according to locals, here are the top things to do when you move to St. Louis.



TAKE A DAY TRIP

Meramec Caverns (Approx. 1 hour drive from St. Louis) The “Cave State” has no shortage of expansive caverns for nature lovers and adventurers to explore. This 4.6 mile cavern system is not just a natural wonder but a history lesson as well.

Elephant Rocks State Park (Approx. 1.5 hour drive from St. Louis) Located just outside the Mark Twain National Forest, this park offers unique, elephantine rock formations.

Garden of the Gods (Approx. 2.5 hour drive from St. Louis) One of the most photographed spots in the state, Garden of the Gods features 100-foot bluffs and gorgeous sandstone rock formations.



ENJOY THE LOCAL CULTURE

The Museum at Gateway Arch

GatewayArch.com An inside look at the city's untold stories through six interactive museums.

St. Louis Science Center | slsc.org A museum of over 700 exhibits, an OMNIMAX® Theatre, the James S. McDonnell Planetarium and more.

St. Louis Art Museum | slam.org A world renowned fine arts museum known for its outstanding and comprehensive collection spanning 5,000 years of cultures and genres.

Missouri History Museum

MOHistory.org/museum One of the most visited history museums in the nation, looking at the history of the St. Louis region from the Mississippian people up to the present day.

The Muny: Municipal Opera

 | muny.org

At nearly 11,000 seats, The Muny is America's oldest and largest outdoor musical theatre.

Cathedral Basilica

 | CathedralSTL.org

One of the most historic buildings in St. Louis and home to one of the largest mosaic collections in the western hemisphere.

CATCH A GAME

St. Louis is a city that's got game, fielding teams in three major professional sports leagues.

St. Louis Cardinals | mlb.com/cardinals

St. Louis Blues | nhl.com/blues

St. Louis City SC | STLCitySC.com



EXPLORE NEARBY NATURE

St. Louis Zoo | STLZoo.org Dedicated to saving species and bringing people and wildlife together, this zoo is home to over 16,000 animals.

Citygarden Urban Park

 | CitygardenSTL.org

An oasis of free interactive art, fountains and gardens spanning two blocks in downtown St. Louis.

World Bird Sanctuary

 | WorldBirdSanctuary.org

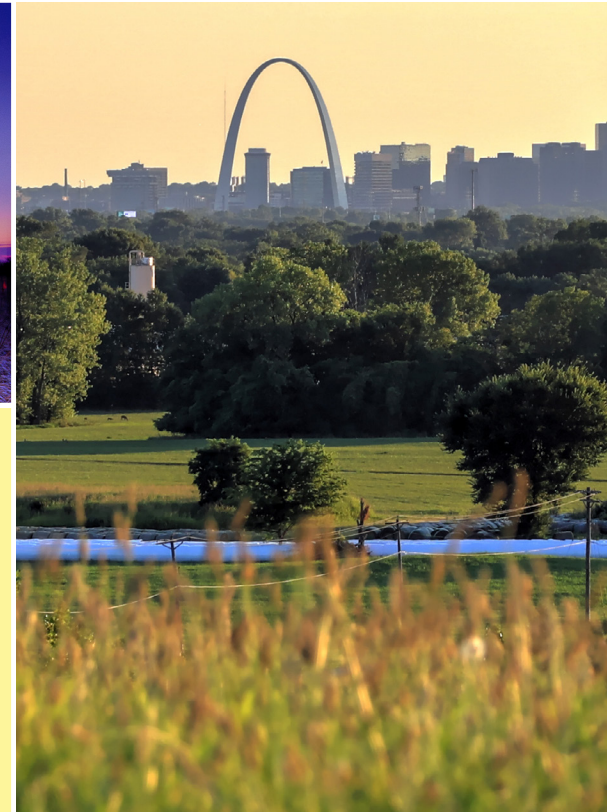
A more than 300 acre reserve for threatened birds and other species featuring educational programs and trails.

Cahokia Mounds | CahokiaMounds.org Considered to be the largest and most complex archaeological site north of the great pre-Columbian cities in Mexico.

Missouri Botanical Garden

MissouriBotanicalGarden.org A National Historic Landmark founded in 1859 with 79 acres of scenic landscaping and historic structures.

Local Directory



GOVERNANCE

City of St. Louis
StLouis-MO.gov

St. Louis County
StLouisCountyMO.gov

City of St. Charles
StCharlesCityMO.gov

UTILITIES

St. Louis Public Utilities
StLouis-MO.gov

St. Louis Water
STLWater.com

SPIRE
SpireEnergy.com

NEWS OUTLETS

STL Today
STLToday.com

TV STATIONS

Channel 4
kmov.com

Fox 2 and KPLR 11
Fox2now.com

Channel 5
ksdk.com

RADIO STATIONS

92.3 – Country
RadioLineup.com/stations/wil-fm

94.7 – Rock
RadioLineup.com/stations/kshe-fm

98.1 – Hot AC
RadioLineup.com/stations/kyky-fm

103.3 – Classic Hits
RadioLineup.com/stations/klou-fm

105.7 – Alternative
RadioLineup.com/stations/kpnt-fm

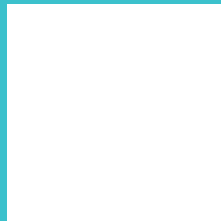
106.5 – Adult Hits
RadioLineup.com/stations/warh-fm

gcu.edu/ABSN



St. Louis, MO Learning Site | 866-483-6578 | 721 Emerson Road, Suite 500 | St. Louis, MO 63141

FOR MORE INFORMATION, CONTACT:



The provision of information in this relocation guide is for the convenience of Grand Canyon University ABSN program students, faculty and staff. The providers of various services listed in this guide are solely responsible for presenting information fairly and accurately. Grand Canyon University does not review or verify such information for fairness or accuracy, and the University cannot and does not guarantee or vouch for the fairness or accuracy of the information provided. The provision of information does not constitute and shall not be construed as an endorsement or approval by the University of the provider of services, including the suitability or safety of rental properties or other housing arrangements. Please exercise your good judgment and due diligence when evaluating any services described in this guide.

Grand Canyon University is accredited by the Higher Learning Commission (HLCCommission.org), an institutional accreditation agency recognized by the U.S. Department of Education. Please note, not all GCU programs are available in all states and in all learning modalities. Program availability is contingent on student enrollment. For more information on the accreditation of nursing programs and other university approvals, please visit our University Accreditation and Regulations page at gcu.edu/CONHCPAccreditation. Important policy information is available in the University Policy Handbook at gcu.edu/academics/academic-policies.php. The information printed in this material is accurate as of AUGUST 2024. For the most up-to-date information about admission requirements, tuition, scholarships and more, visit gcu.edu. Approved by the of the Dean of the College of Nursing and Health Care Professions on Aug. 19, 2024. ©2024 Grand Canyon University 24GCU00241